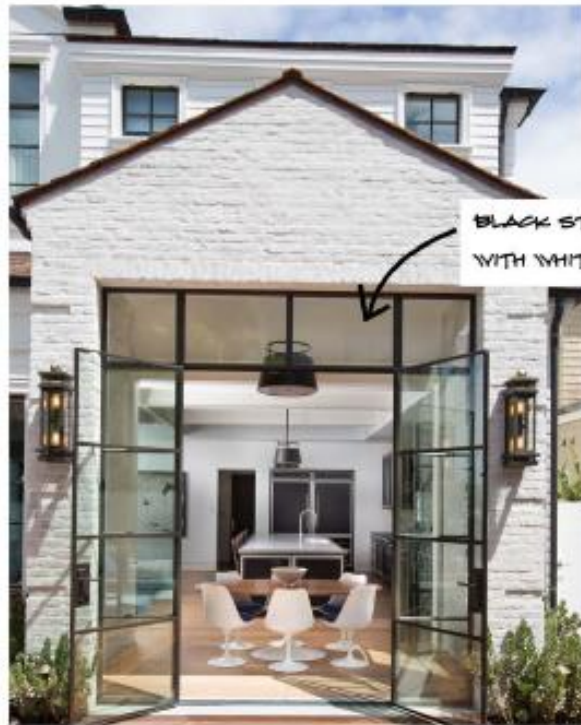




## Interior Design Plans

616 Bougainvillea Road  
Naples, FL





BLACK STEEL DOORS  
WITH WHITE BRICK



WHITE BRICK



GRASS AREA  
WITH PALMS

BLACK STANDING SEAM METAL  
ROOF WITH BRACKETS



SUNKEN CABANA WITH FIREPLACE  
OR FIRE FEATURE



OUTDOOR SHOWER  
AT MASTER BATH



INTERIOR STAIRS  
WITH STEEL AND WOOD



TRELLIS PATH  
TO STUDY



WHITE BRICK  
IN POOL BATH



WHITE BRICK AT  
PRIVACY WALL

EXTERIOR STAIRS TO FITNESS  
FROM MASTER BEDROOM  
PRIVATE GARDEN



BRINGING IN BLACK  
STEEL AND WHITE BRICK  
INSIDE THE INTERIOR BY ID



SITTING AREA  
WITH BABY GRAND PIANO



STEPPING STONES  
AT OUTDOOR AREA

**MHK**  
ARCHITECTURE  
& PLANNING

595 4TH AVENUE SOUTH  
NAPLES, FLORIDA 34102  
PHONE: (239) 919-0788  
WWW.MHKAP.COM

CONSULTANT:

BARSAMIAN  
616 BOUGAINVILLEA RD  
NAPLES, FLORIDA 34102

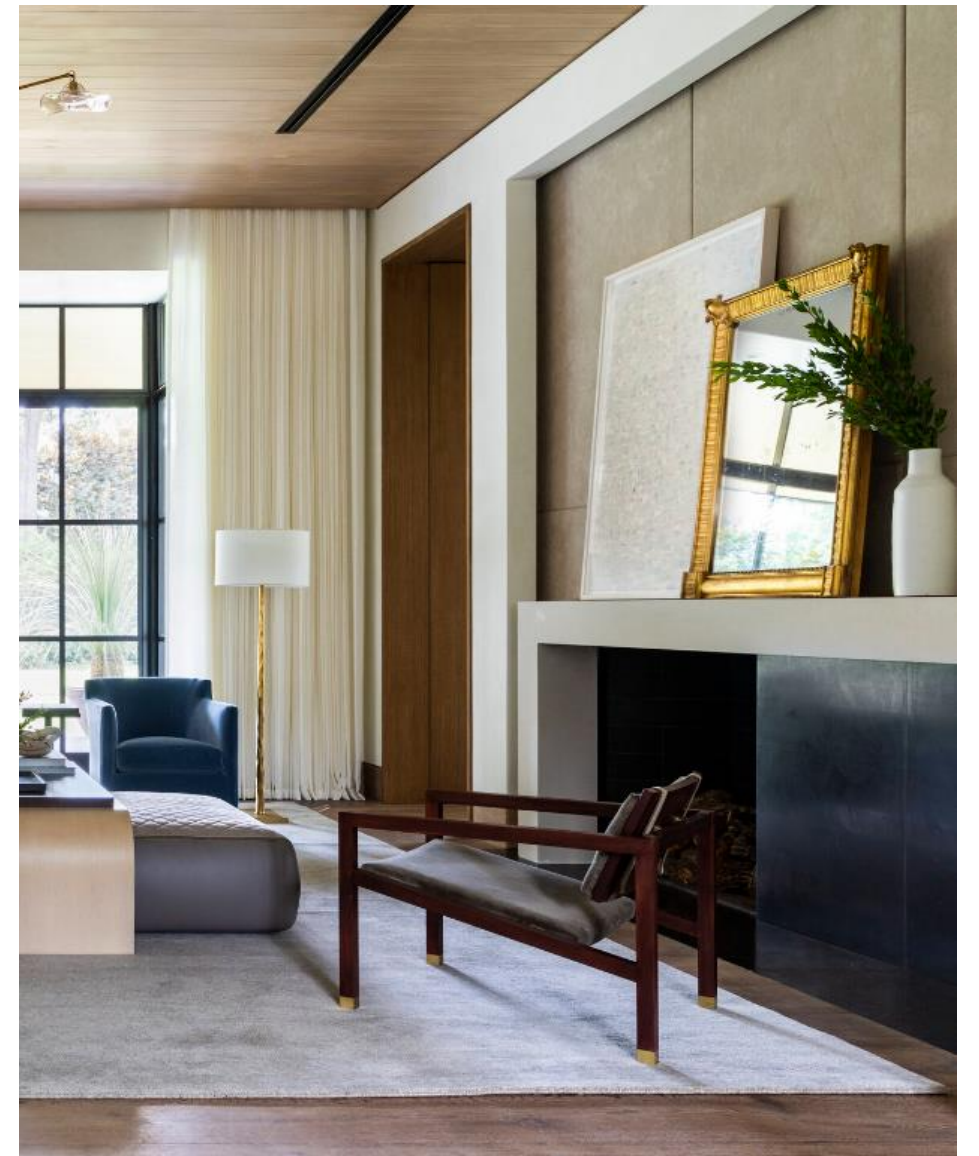
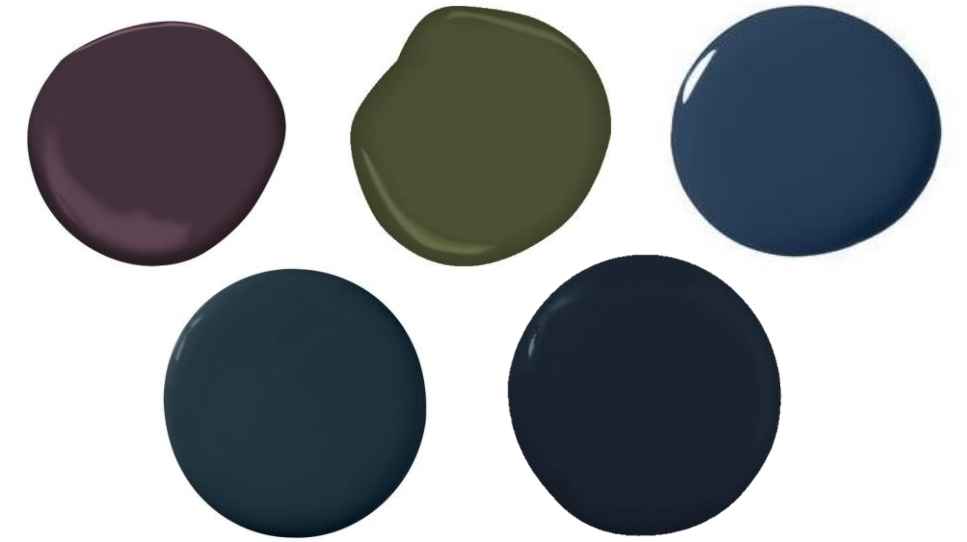
FLORIDA SEAL  
FROM APR 1981

DATE: 03.11.2022  
VISION BOARD

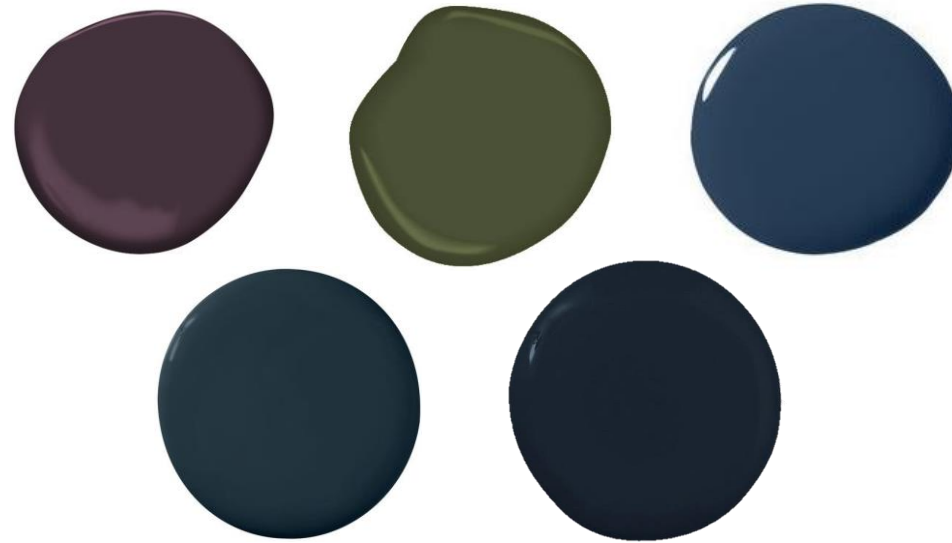
DRAWN BY: PS  
CHECKED BY: MKJO

PHASE 5D  
PR NO: 22006











INTERIOR PAINT COLOR  
BM CHANTILLY LACE  
THROUGHOUT



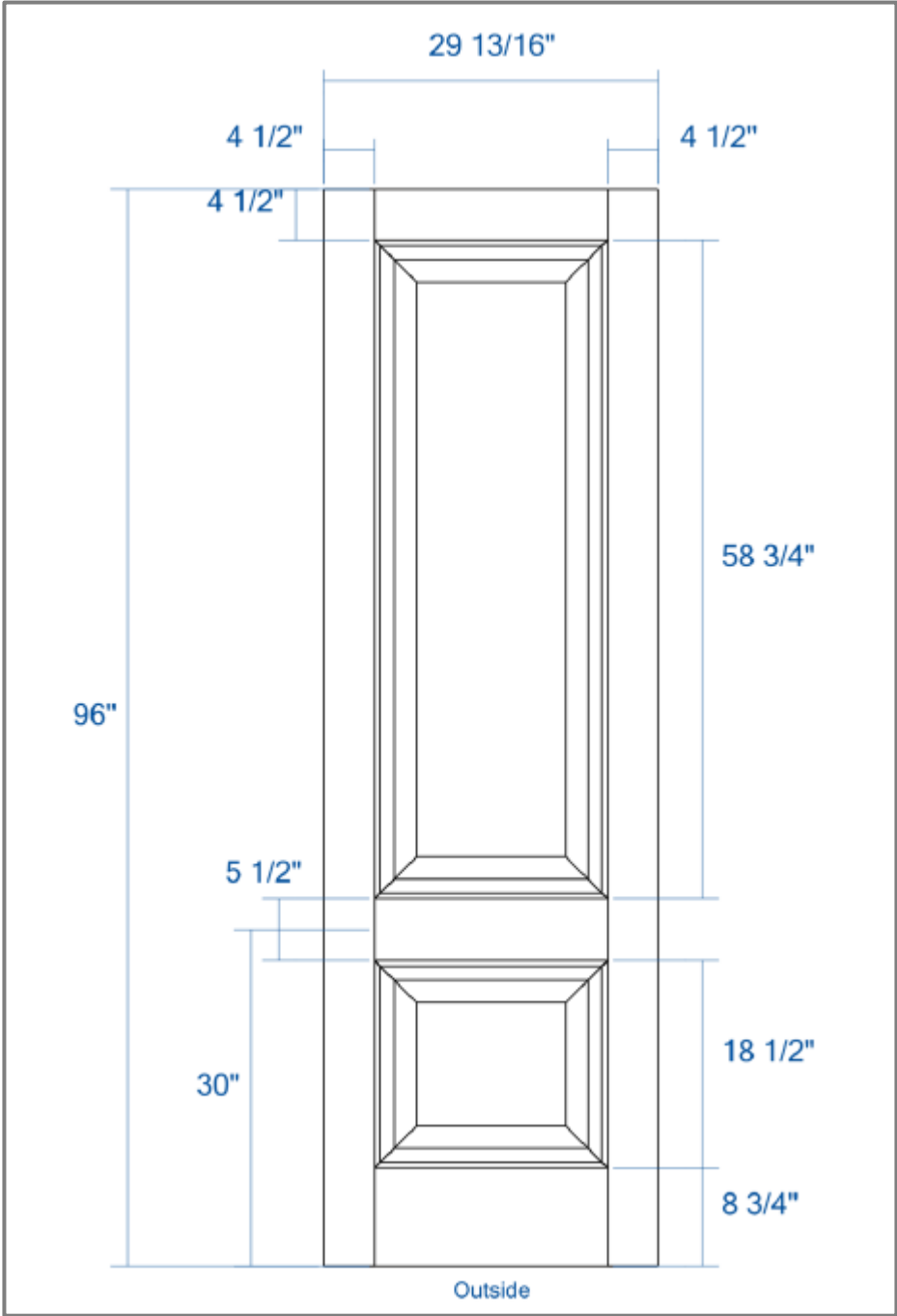
FLOORING  
8" PLANKS THROUGHOUT



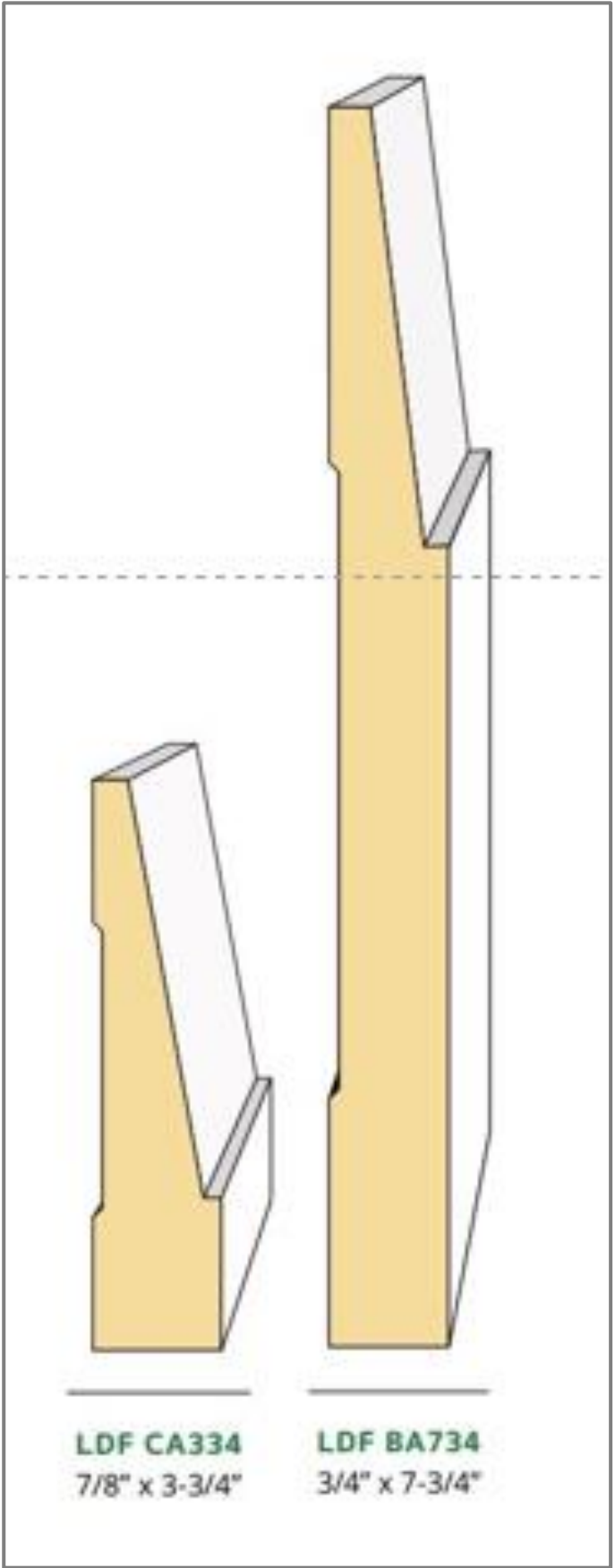
FLOORING  
INLAY AREAS AS  
INDICATED ID DRAWINGS



DOOR HANDLE  
POLISHED NICKEL



DOOR STYLE



TRIM  
THROUGHOUT





INLAY AT FRONT ENTRY



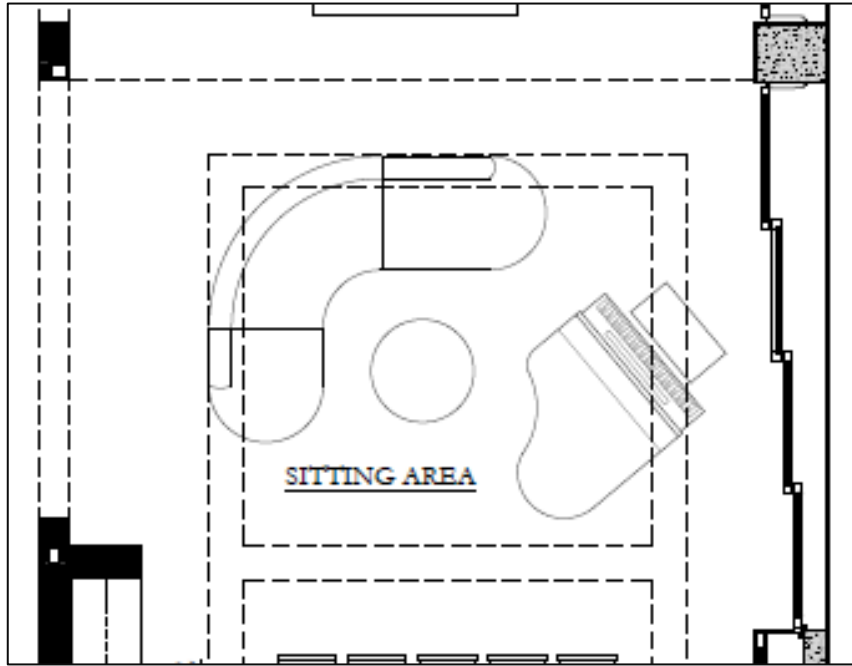
FLOORING  
THROUGHOUT







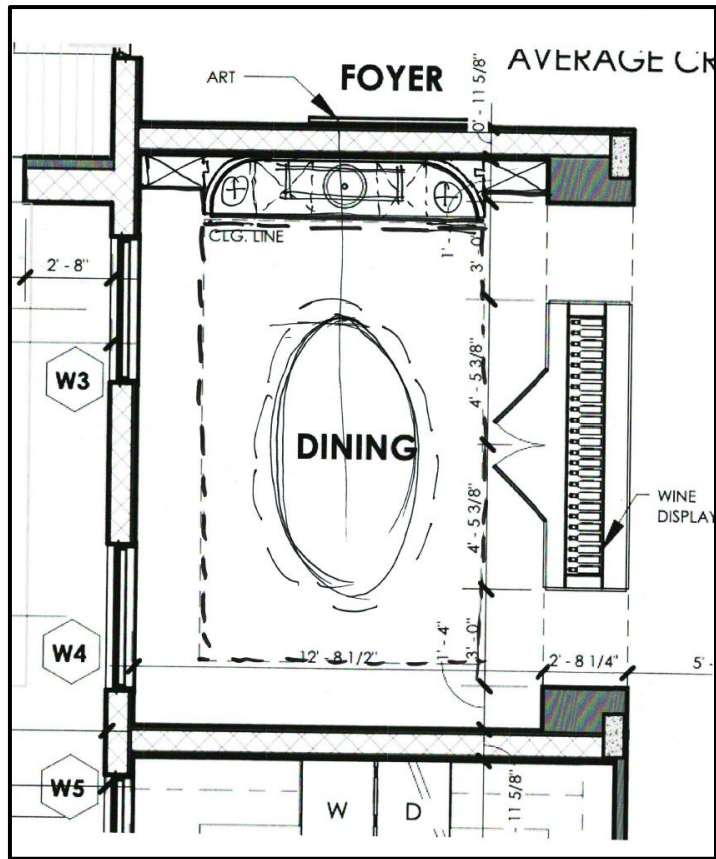












CHANDELIER



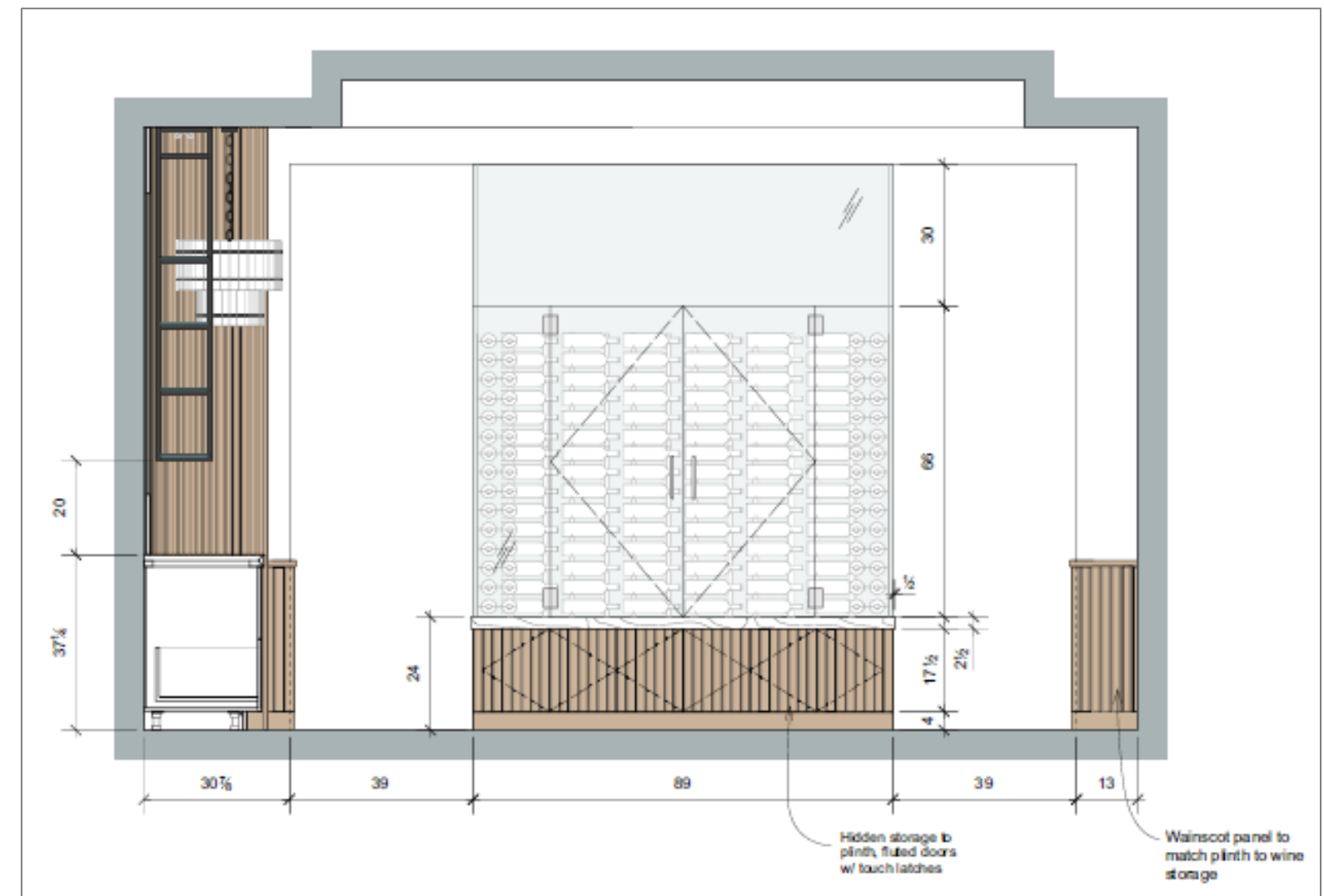
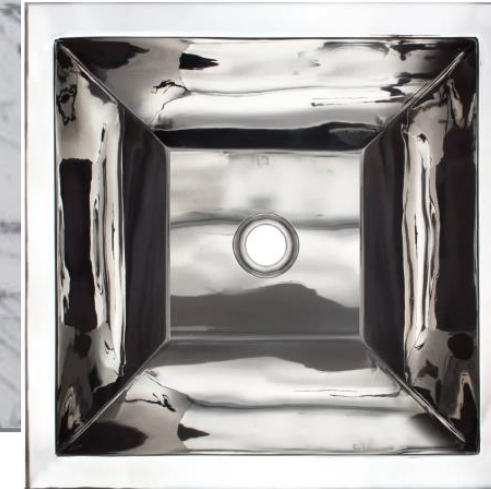
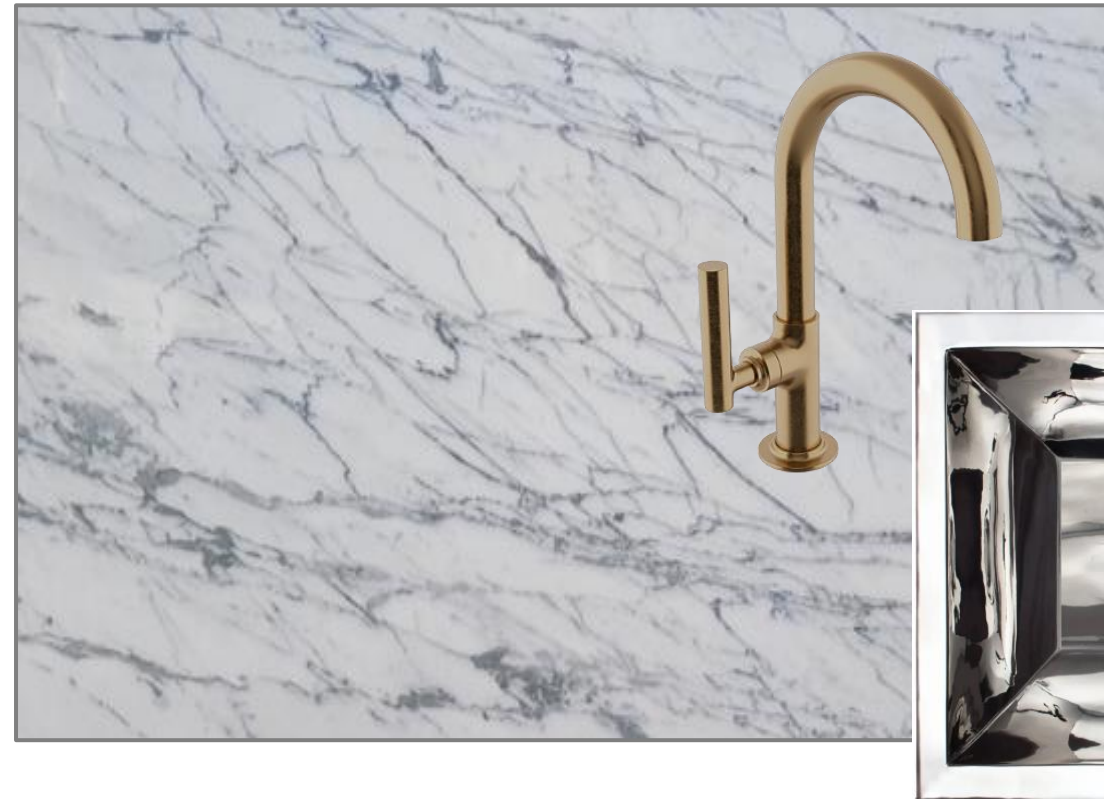
COUNTERTOP



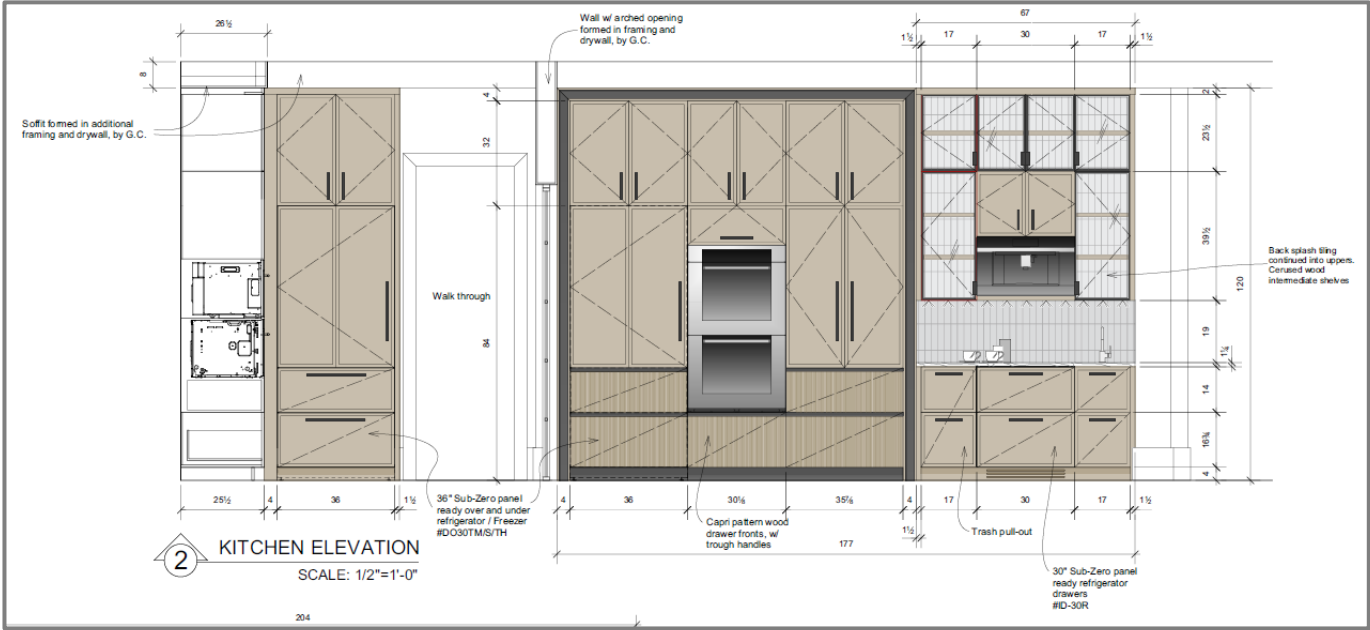
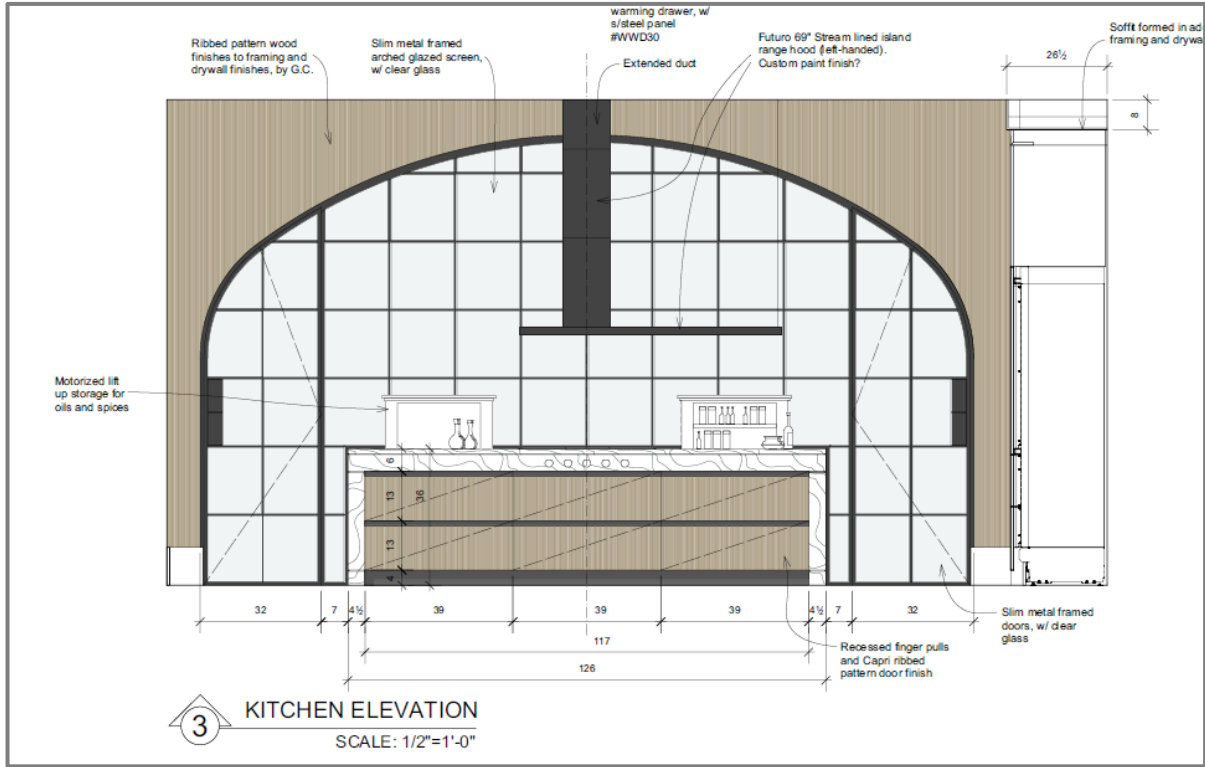
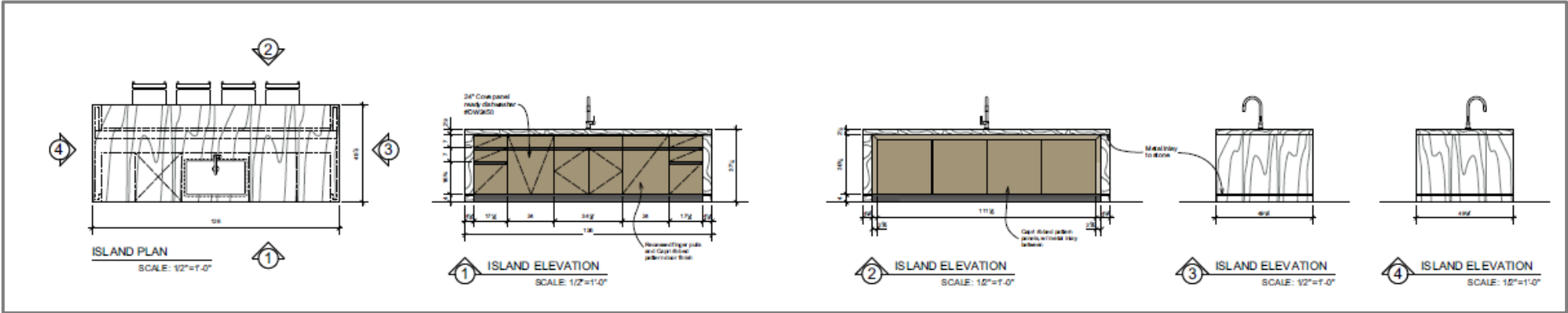
SINK  
FINISH AS SHOWN











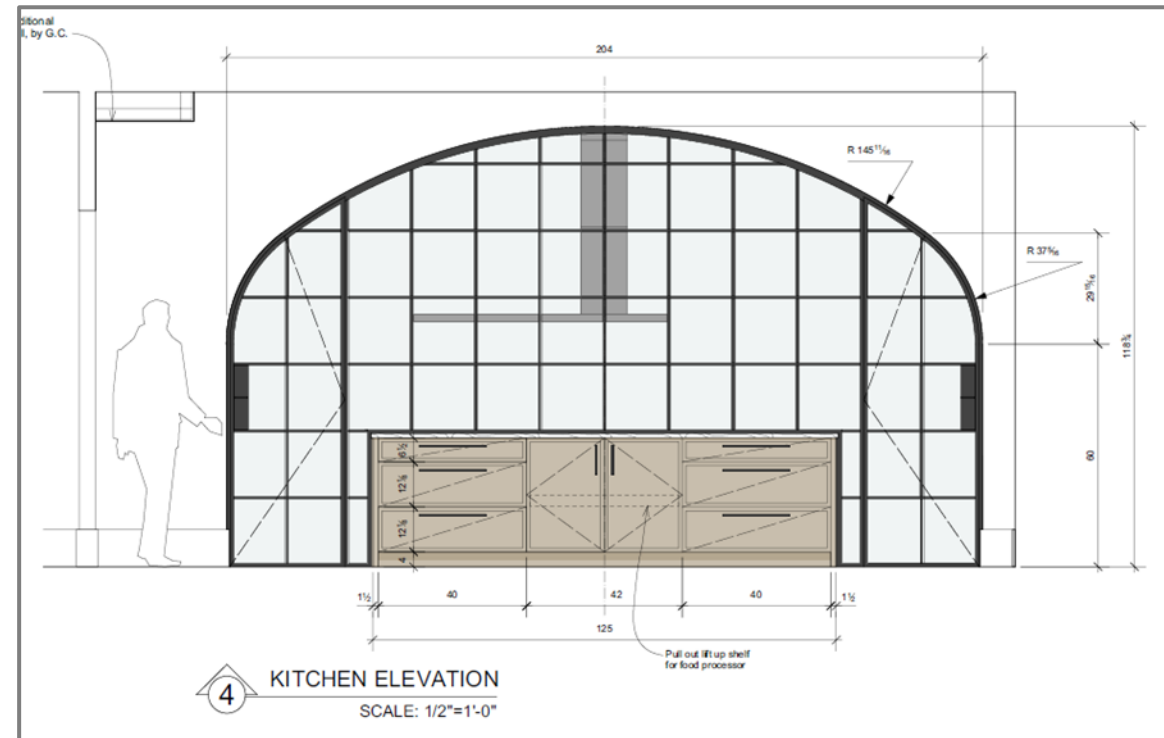
FAUCET  
FINISH IN SATIN GOLD



COUNTERTOP



SINK  
FINISH AS SHOWN



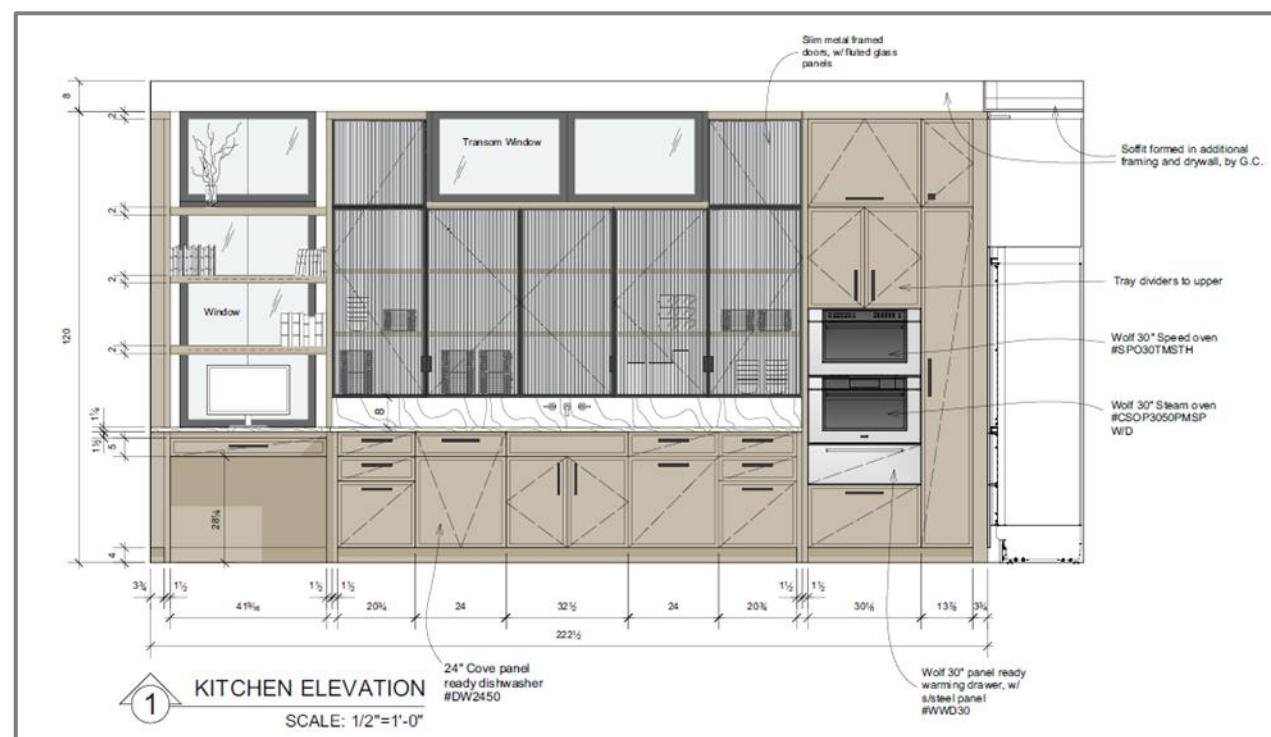
FAUCET  
FINISH IN SATIN GOLD



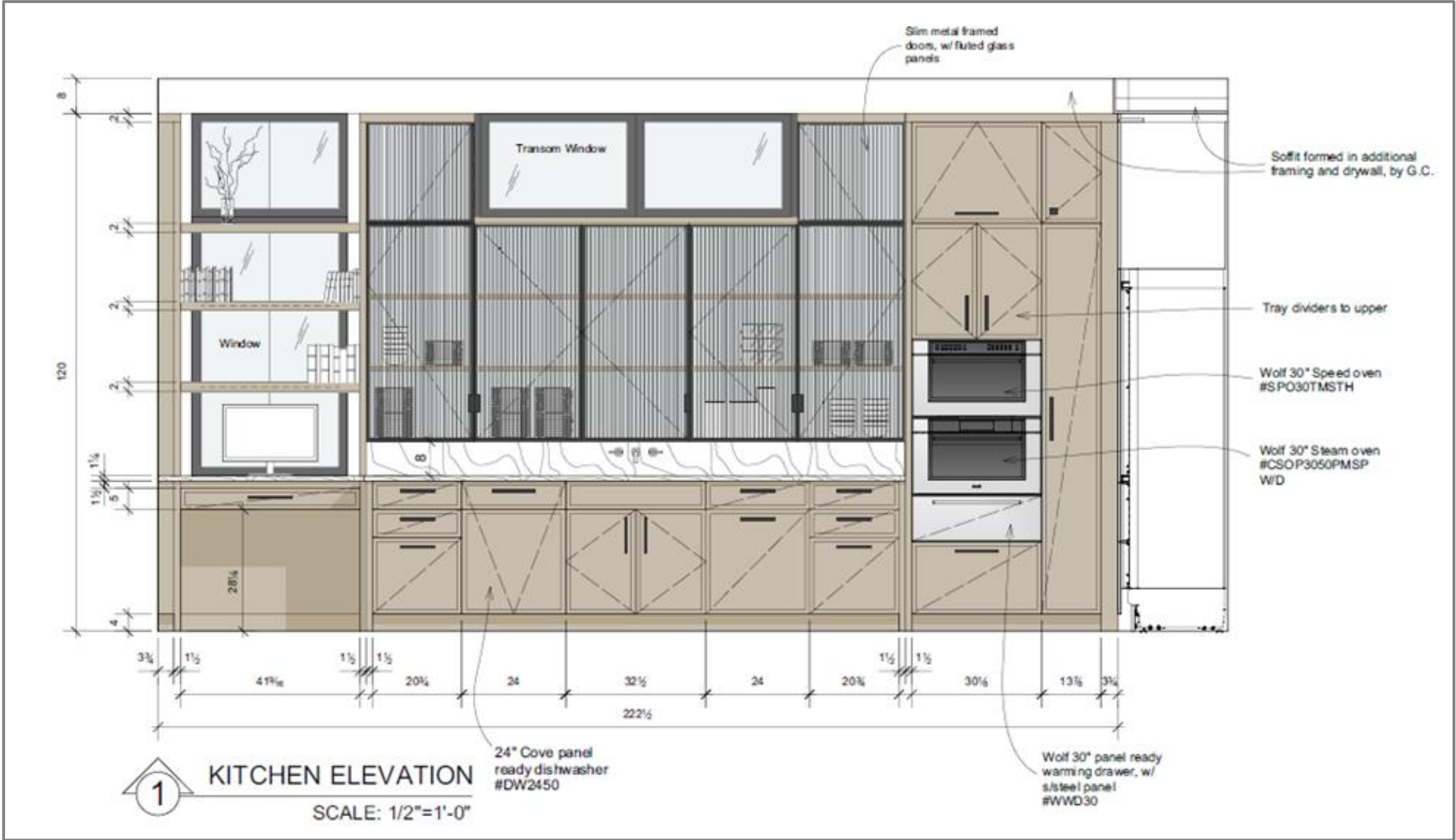
COUNTERTOP



SINK  
FINISH AS SHOWN



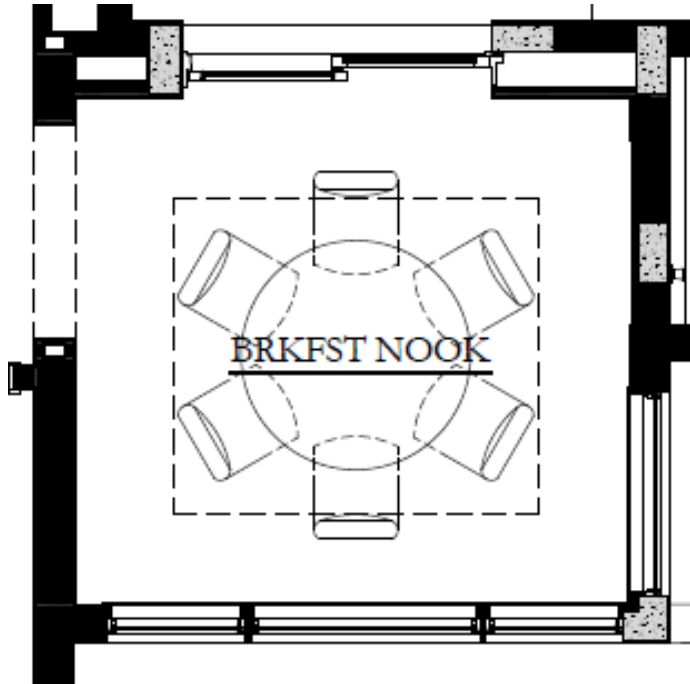




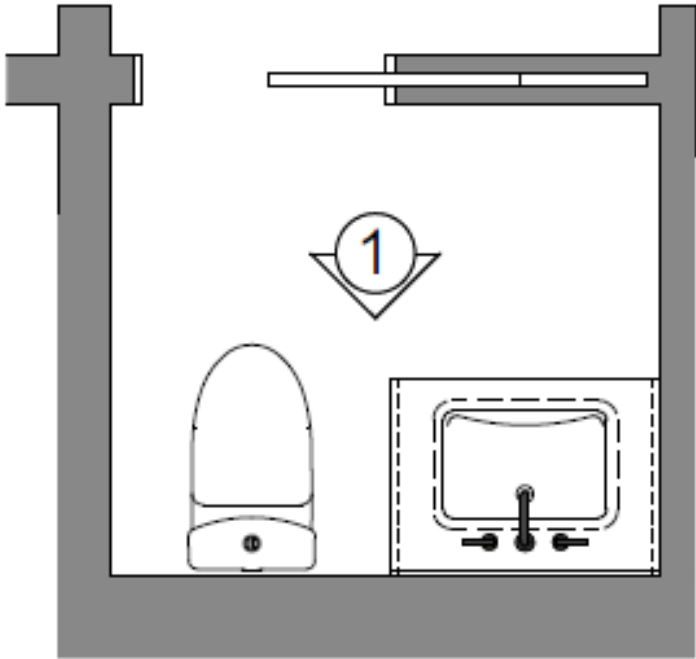
FAUCET  
FINISH IN SATIN GOLD



SINK  
FINISH AS SHOWN







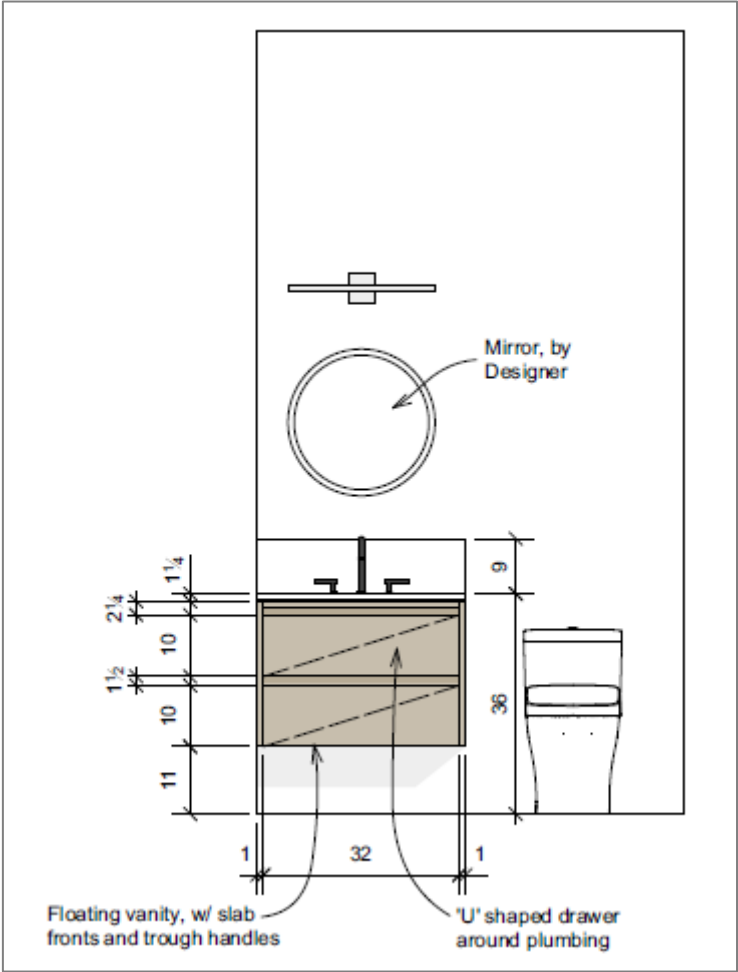
# 616 | STAFF POWDER



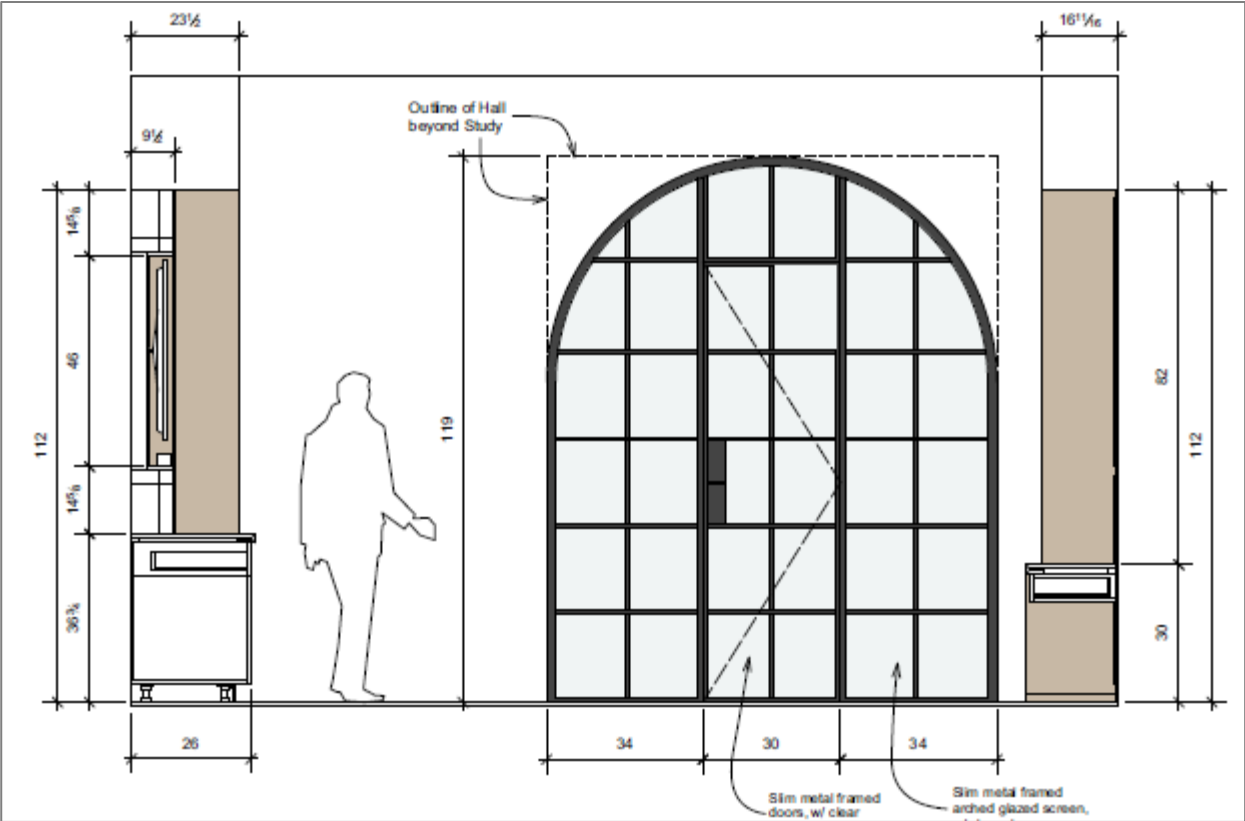
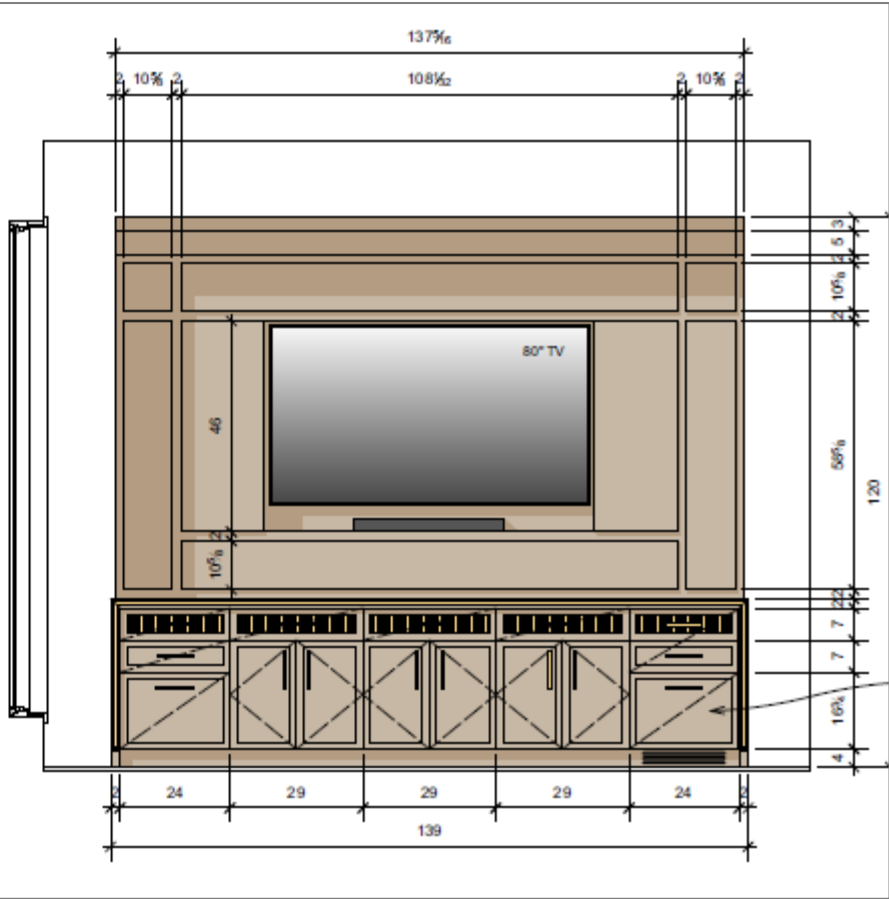
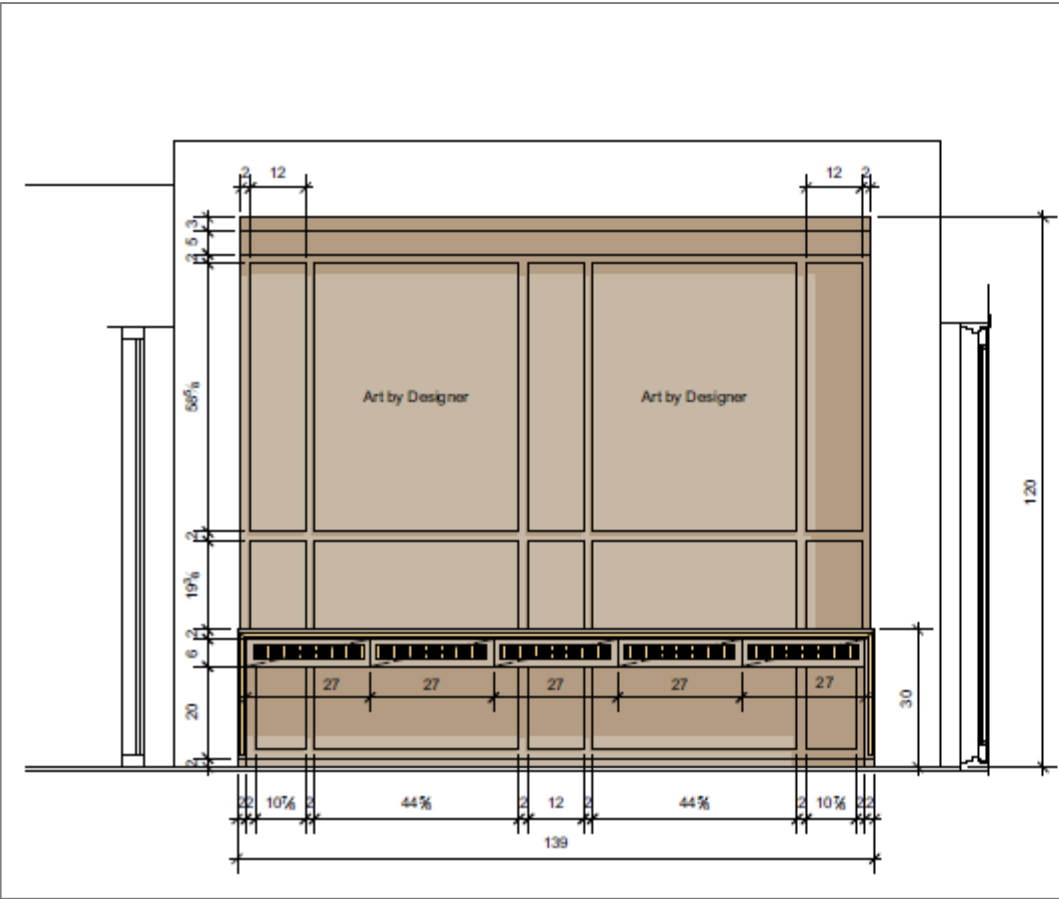
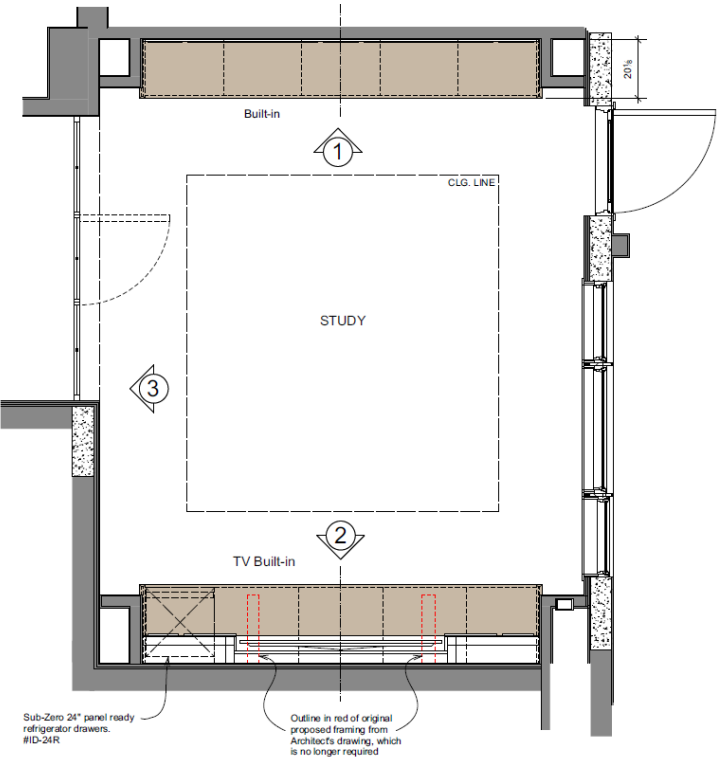
STAFF BATH WRAPPED  
PARTIALLY ON ALL WALLS  
PER ID'S  
2.5" X 10" X 3/8" STACKED  
VERTICALLY



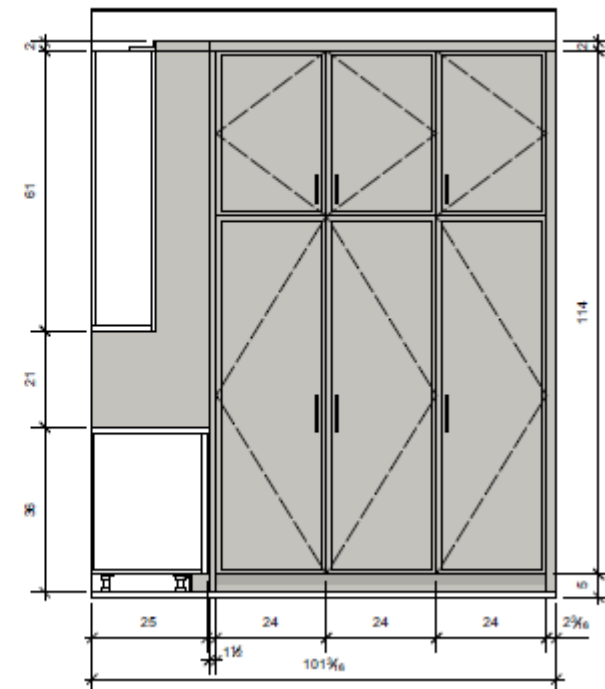
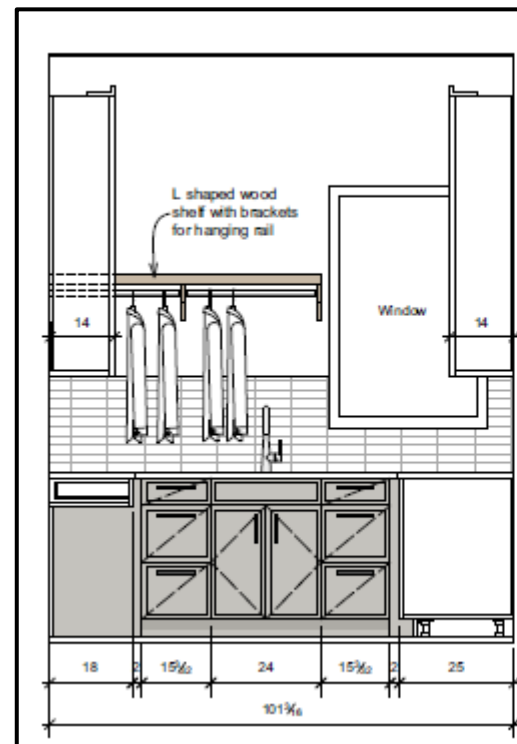
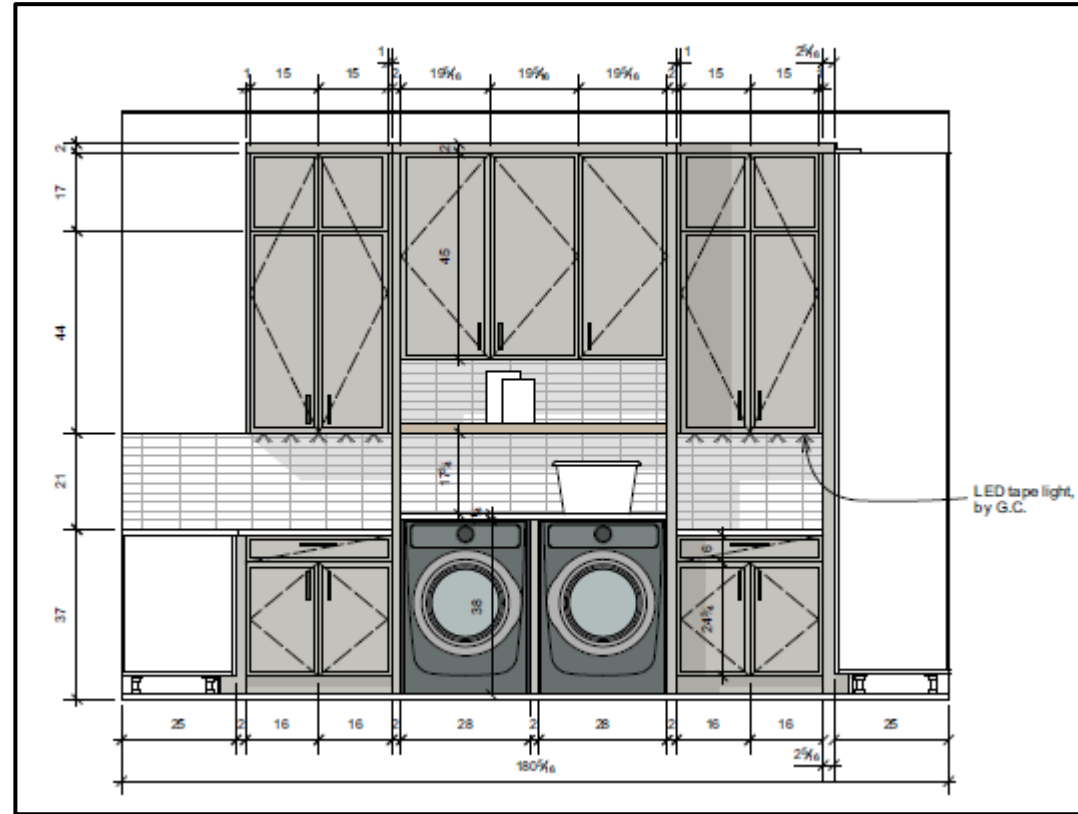
STAFF BATH LINER TO  
CAP TILE  
.4 X 10"

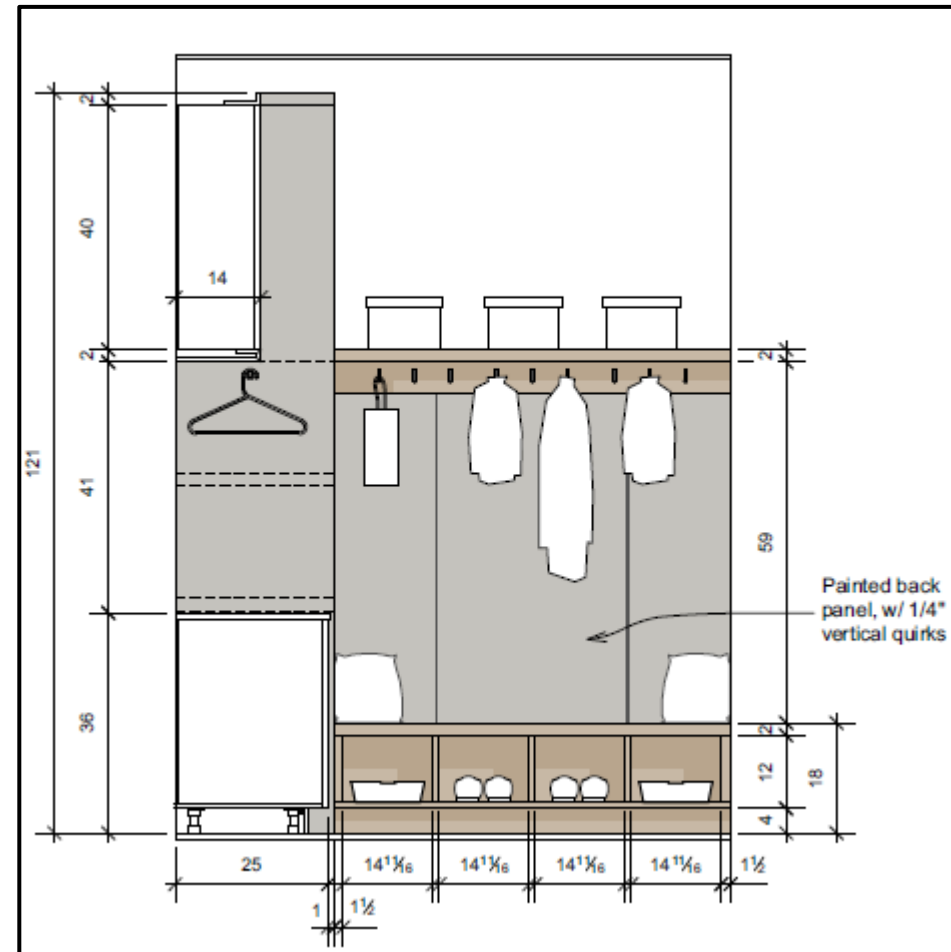
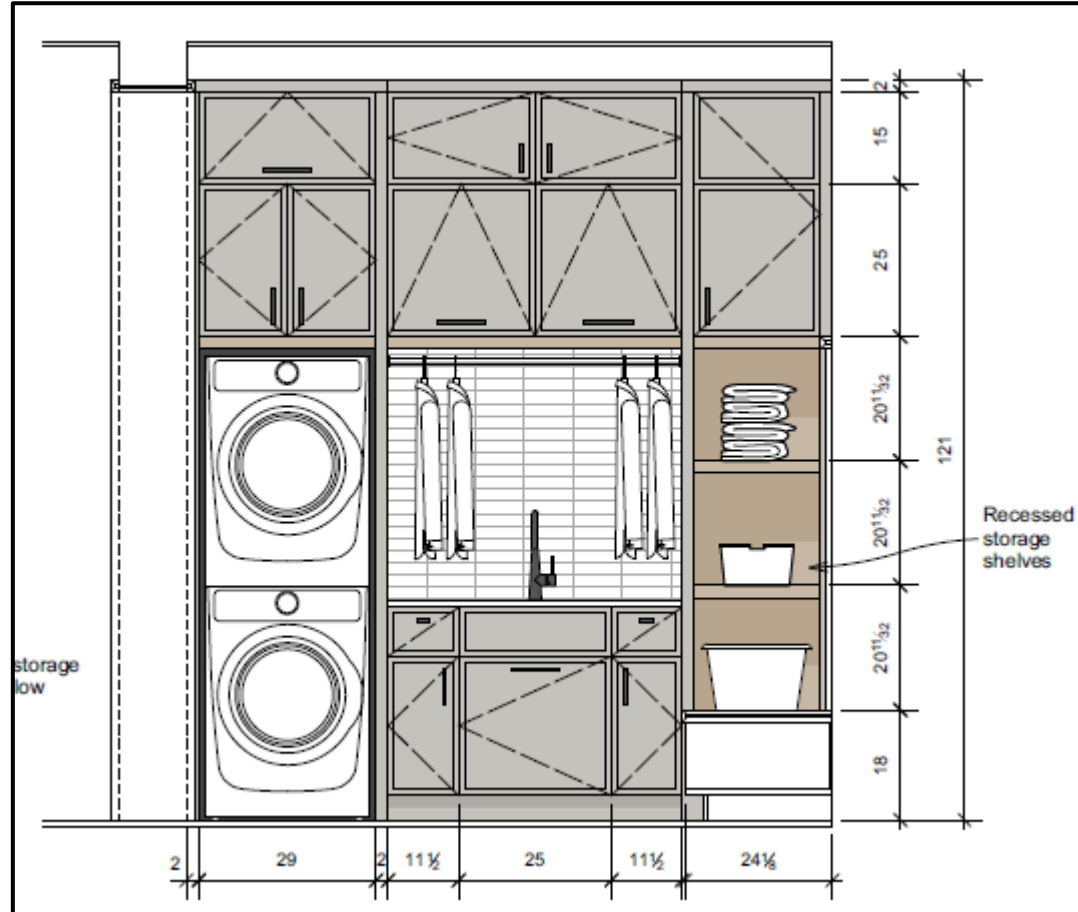


FAUCET  
FINISH AS SHOWN







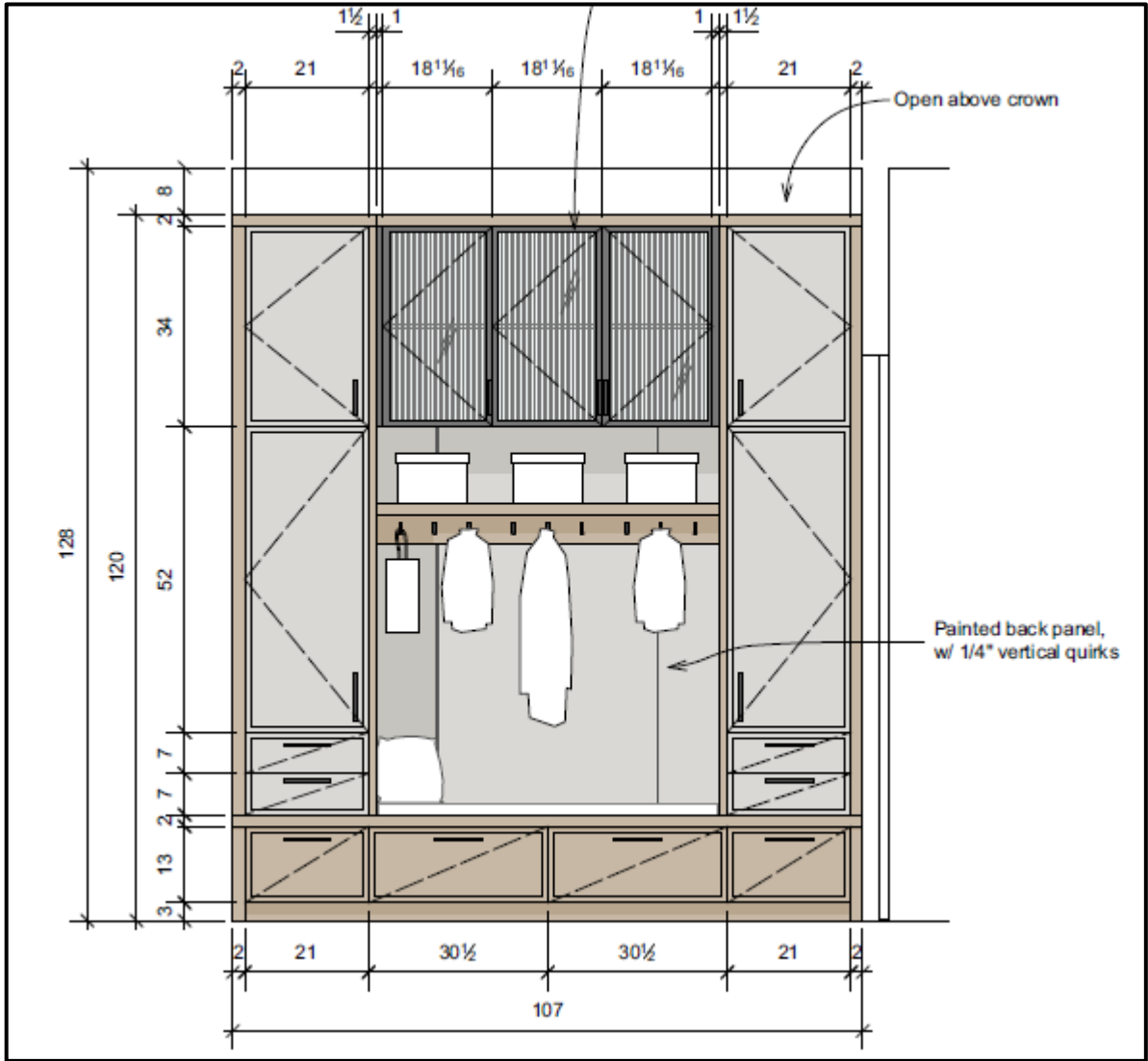


FAUCET  
FINISH AS SHOWN



SINK  
FINISH AS SHOWN

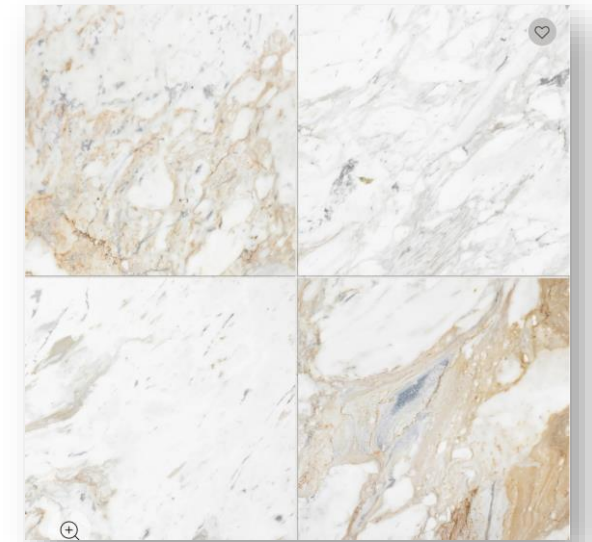
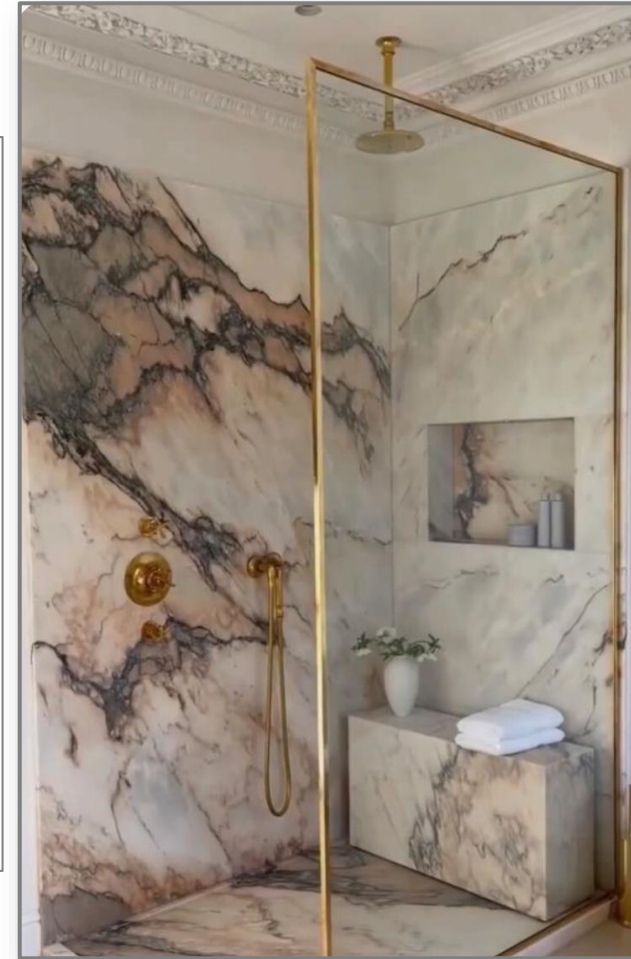




FAUCET  
FINISH AS SHOWN



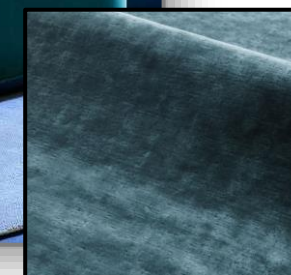
SINK  
FINISH AS SHOWN



MAIN FLOOR AND WALLS  
24" X 24" X 3/8"



COUNTERTOP



FABRIC



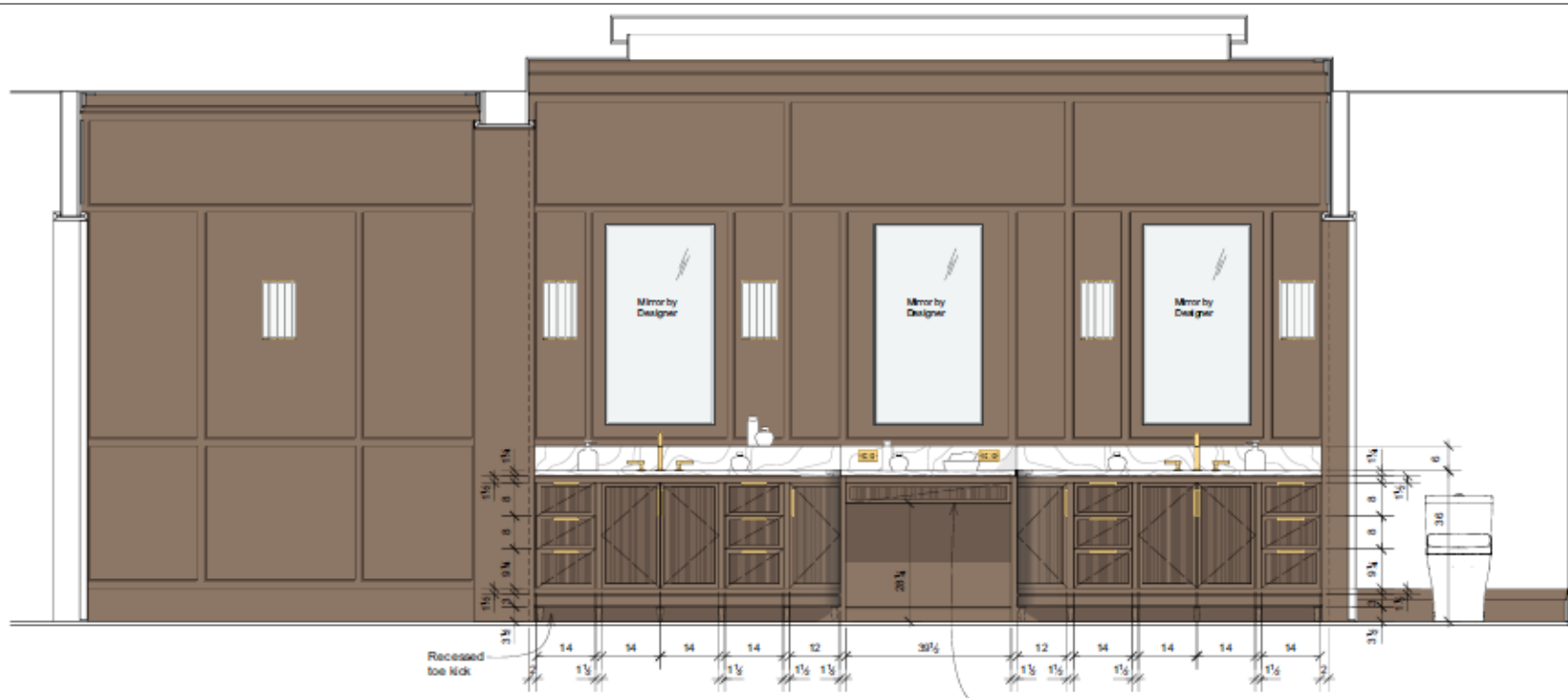
WALL SENCE  
FINISH AS SHOWN



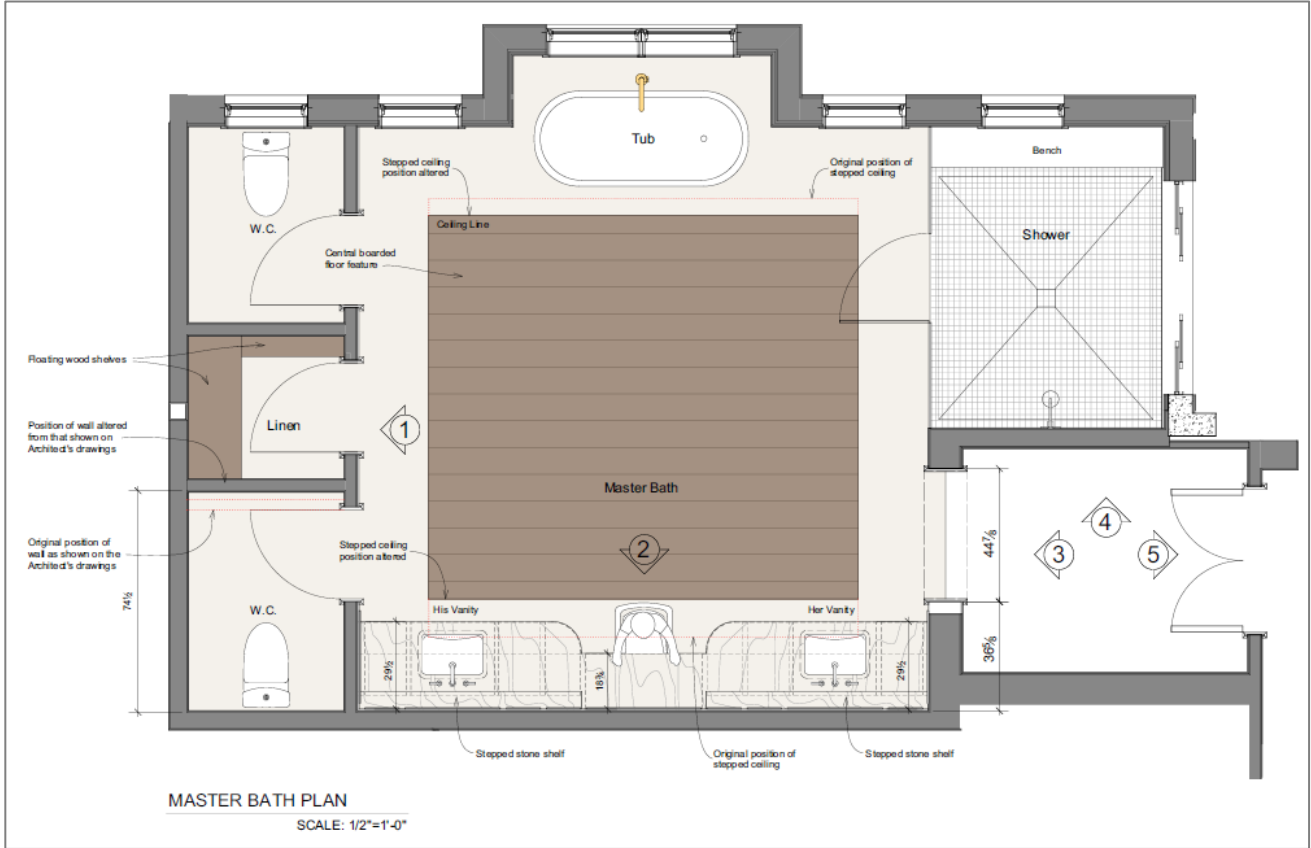
FIXTURE  
 FINISH AS SHOWN



WALL SENCE  
FINISH AS SHOWN





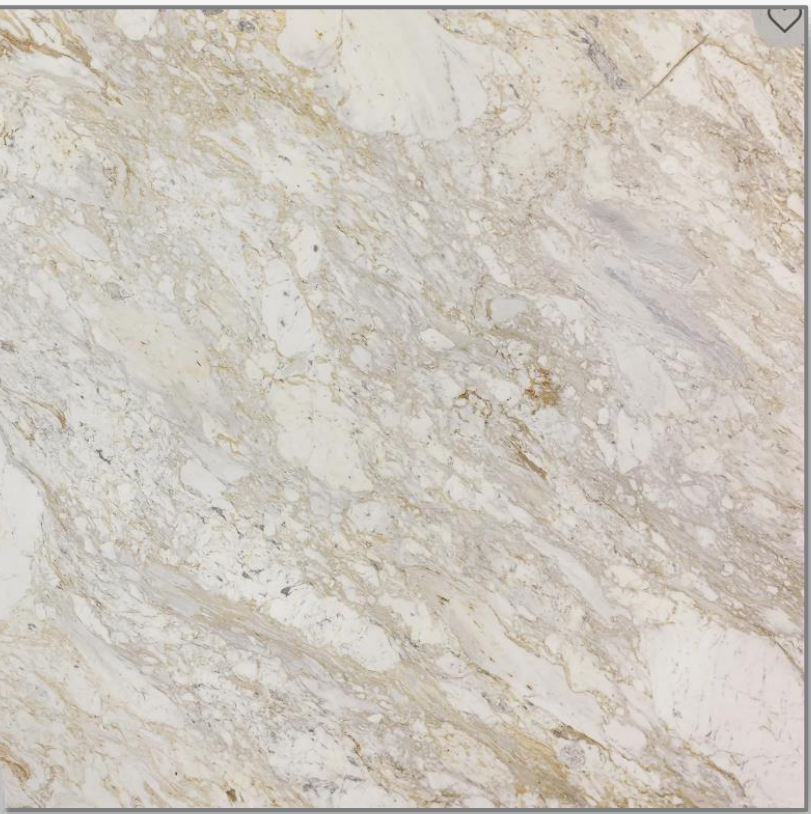


WATERWORKS  
TUB AND TUB FILLER  
FINISH AS SHOWN

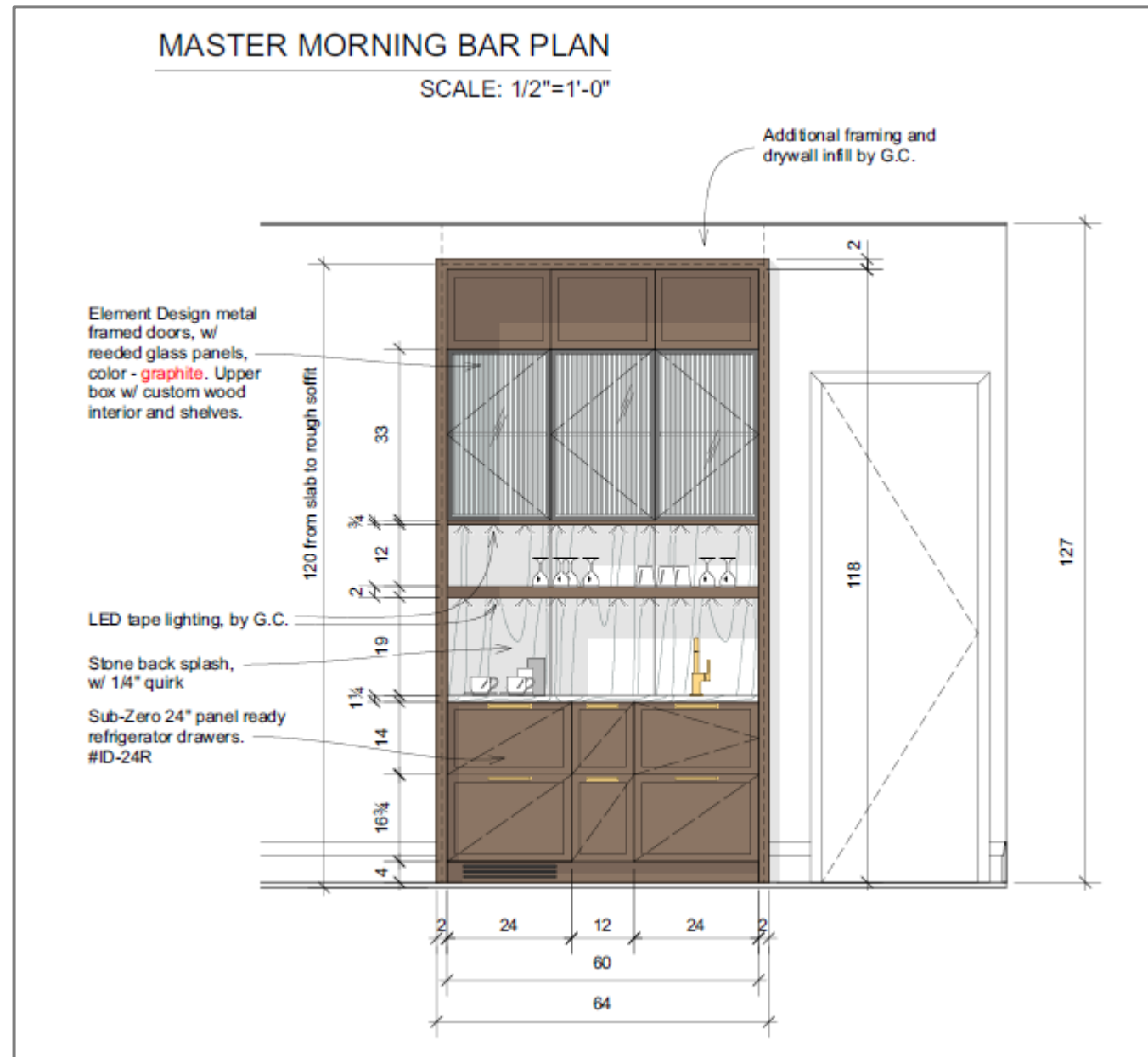


WATERWORKS  
FAUCET  
FINISH AS SHOWN

SINK  
FINISH AS SHOWN



COUNTERTOP

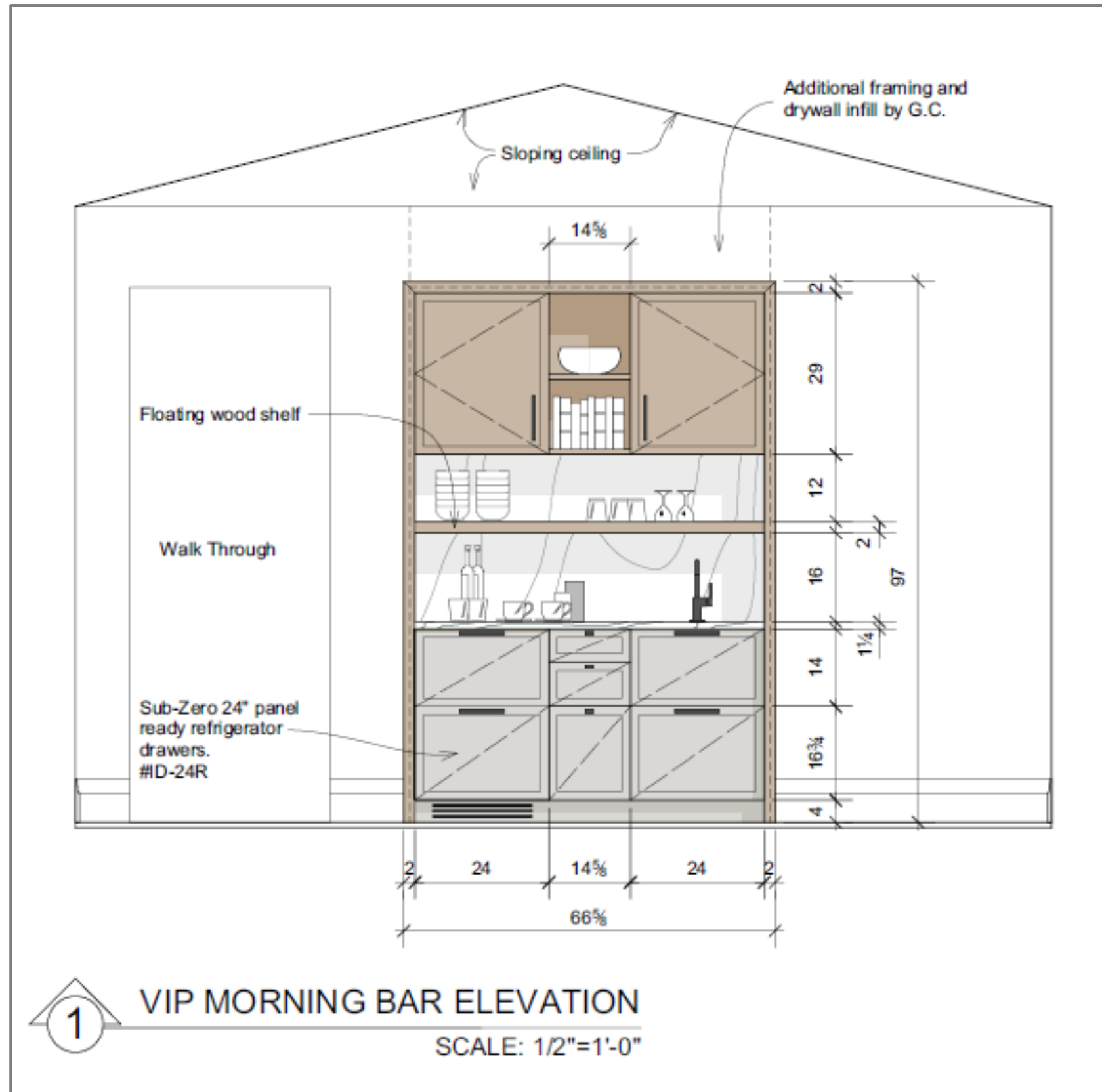


WATERWORKS  
FAUCET  
FINISH AS SHOWN



SINK  
FINISH AS SHOWN

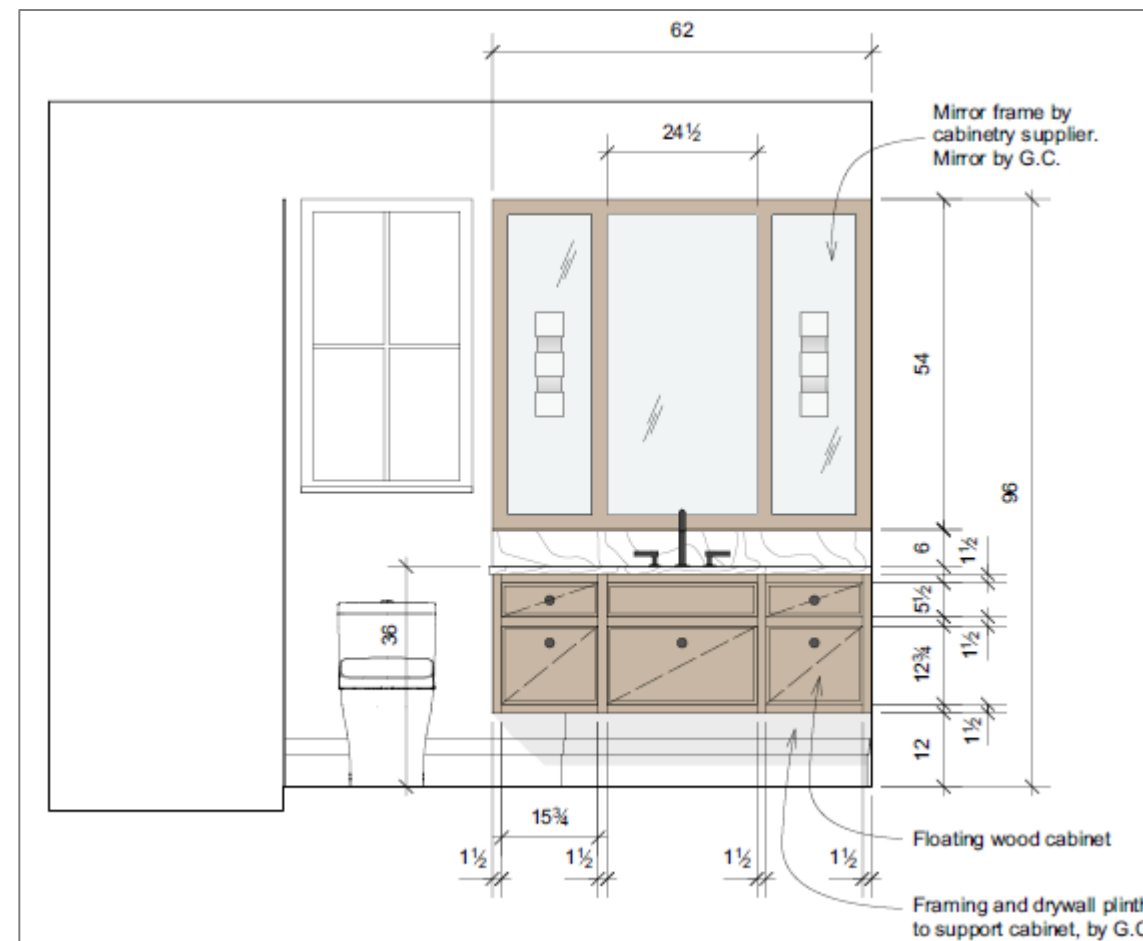
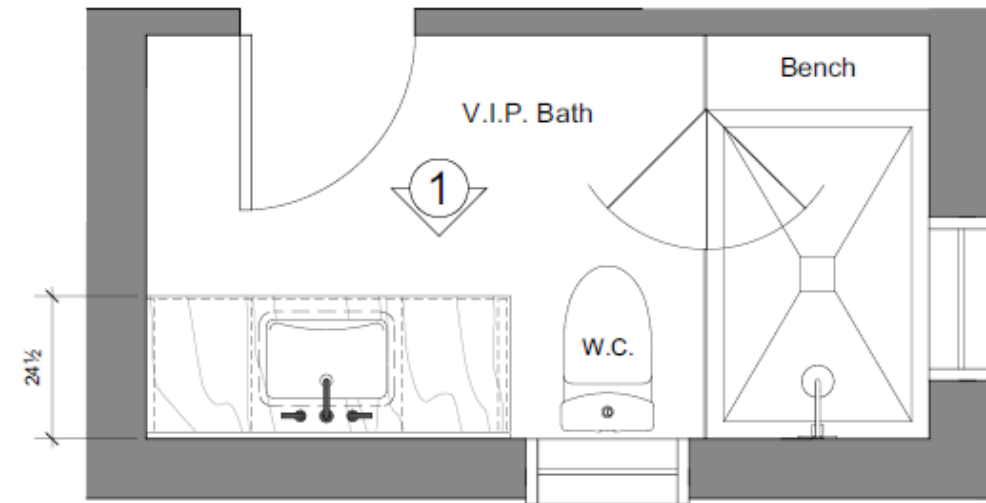




FAUCET  
FINISH AS SHOWN



SINK  
FINISH AS SHOWN

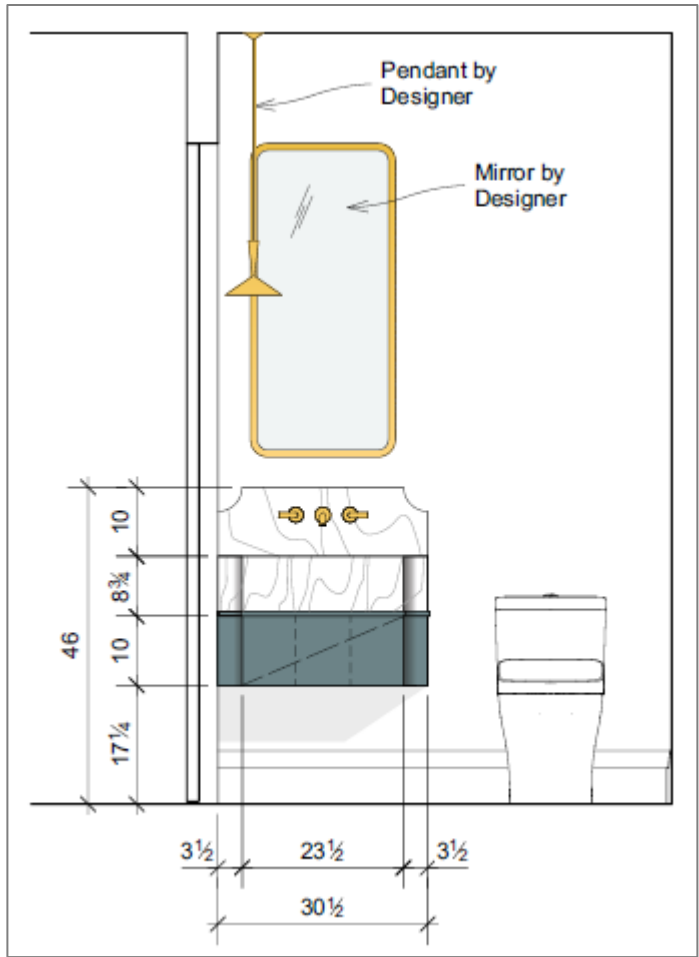
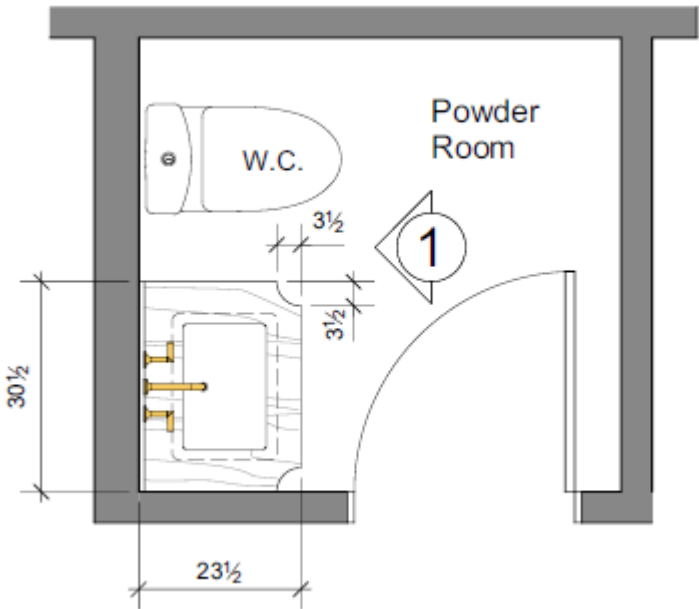


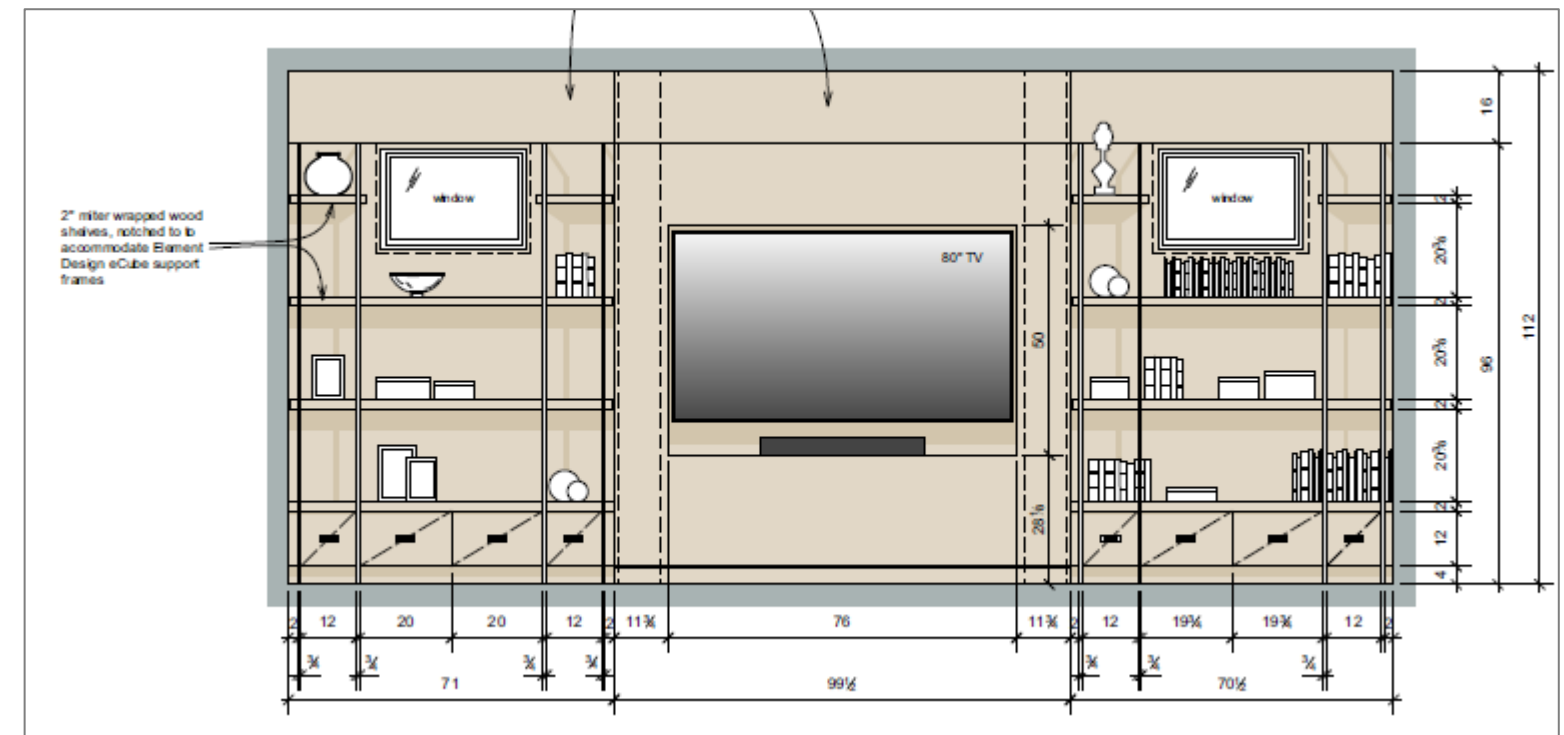
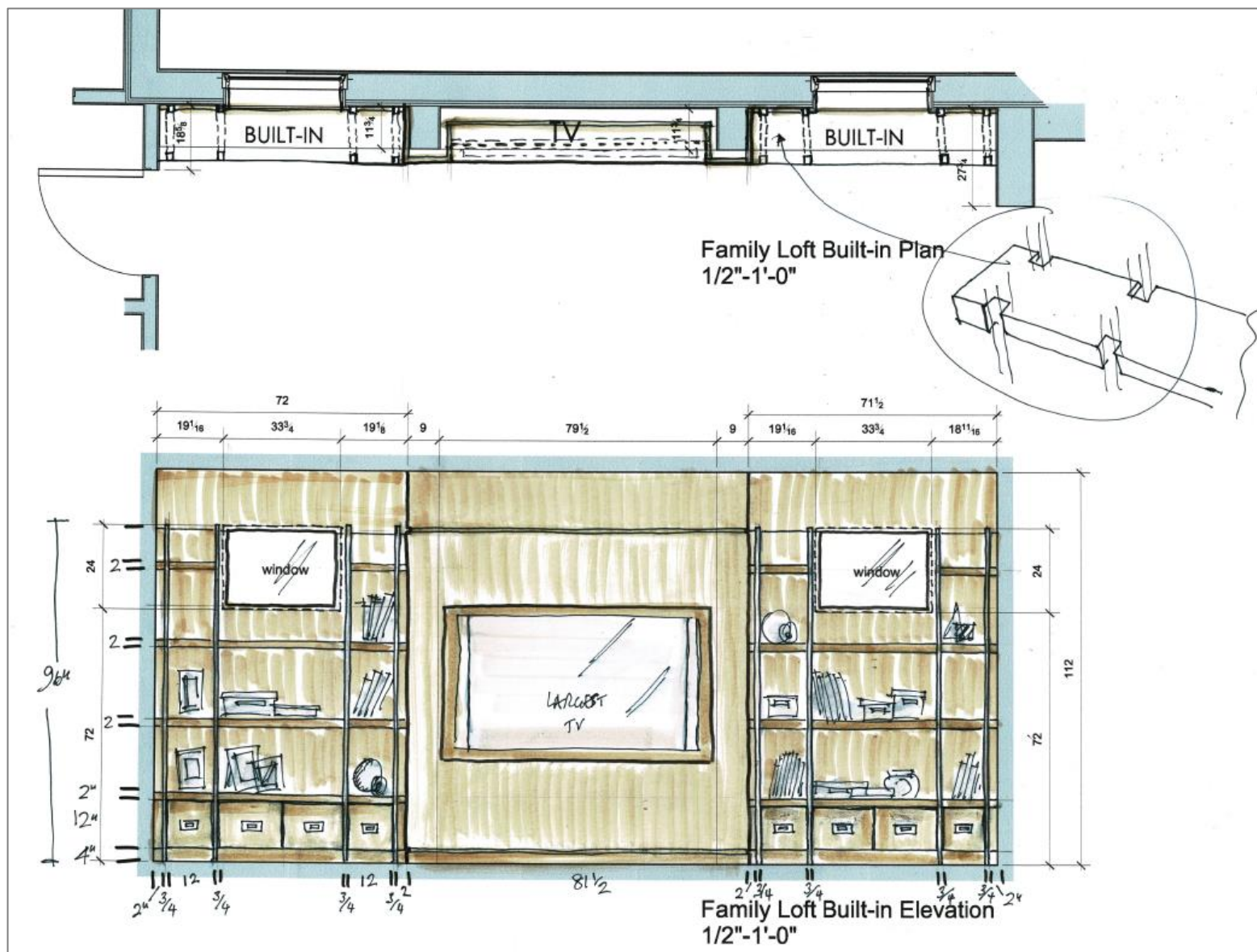
SHOWER ACCENT  
12" X 24" X 3/8"



MAIN AND SHOWER  
FLOOR  
12" X 24" X 3/8"











# 616 | COFFEE BAR

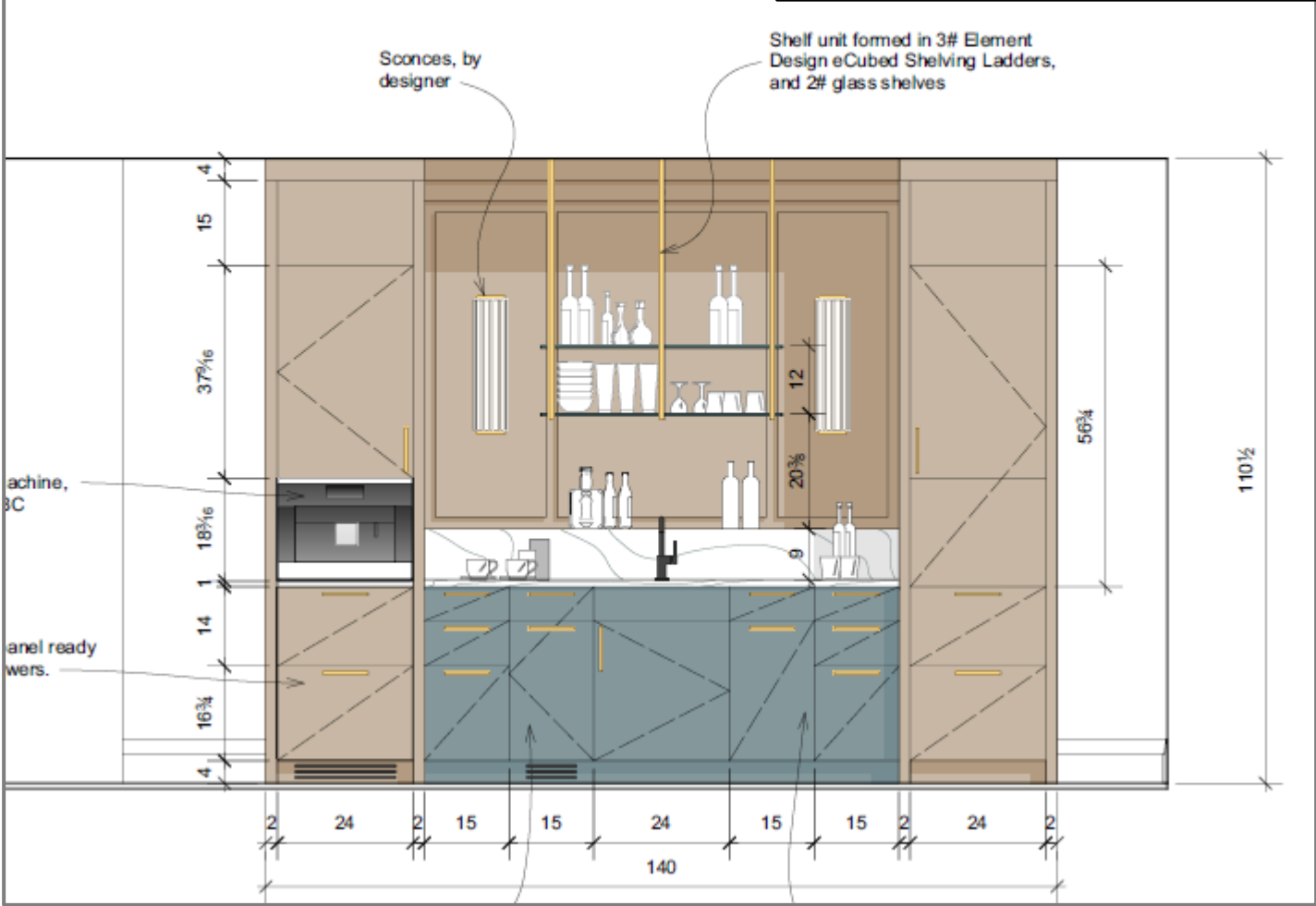


FAUCET  
FINISH IN SATIN GOLD

SINK  
FINISH AS SHOWN

## BRIDGE COFFEE BAR PLAN

SCALE: 1/2"=1'-0"



THEATER BAR PLAN

SCALE: 1/2"=1'-0"

Sconces, by  
designer

Sub-Zero 24" panel ready  
refrigerator drawers.  
#ID-24R

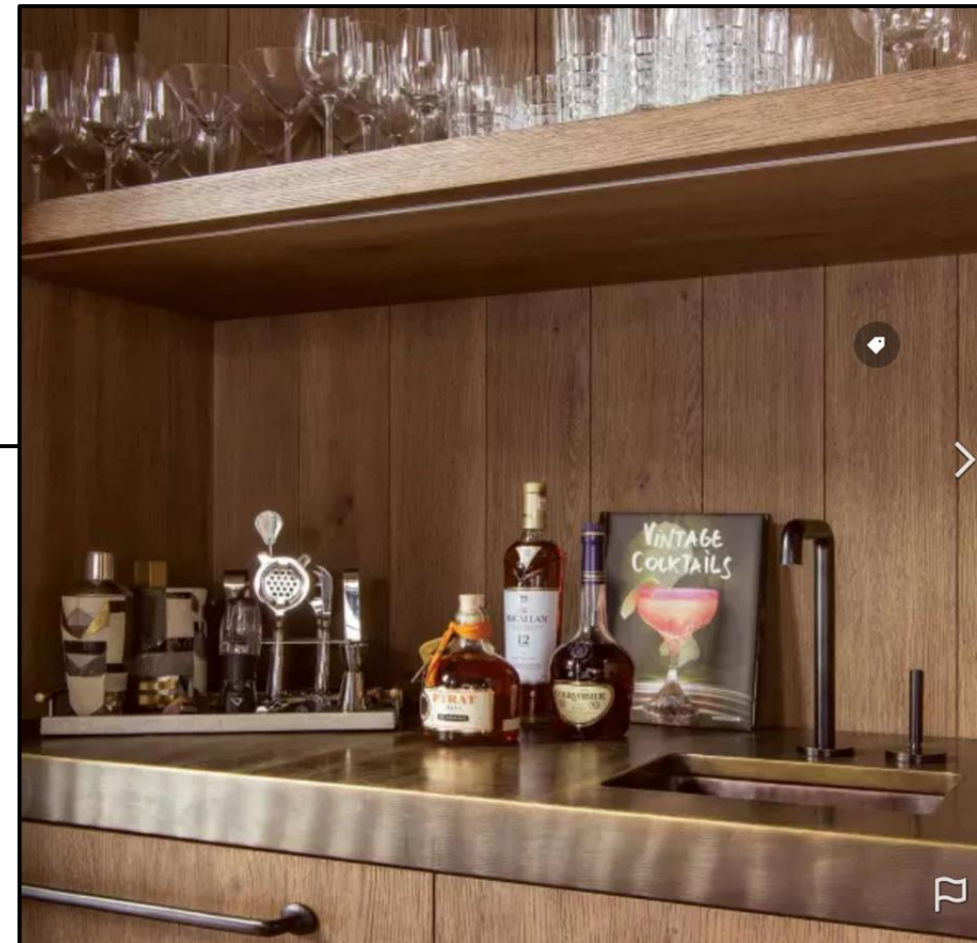
Scotsman 15" panel  
ready ice maker.  
#SSCCP50MB1SU

Trash pull out  
Chemetal finish

Lux interior to uppers  
w/ fluted glass doors

Wolf 24" E series  
microwave oven.  
#SPO24TE/S/TH

Liquor pull out

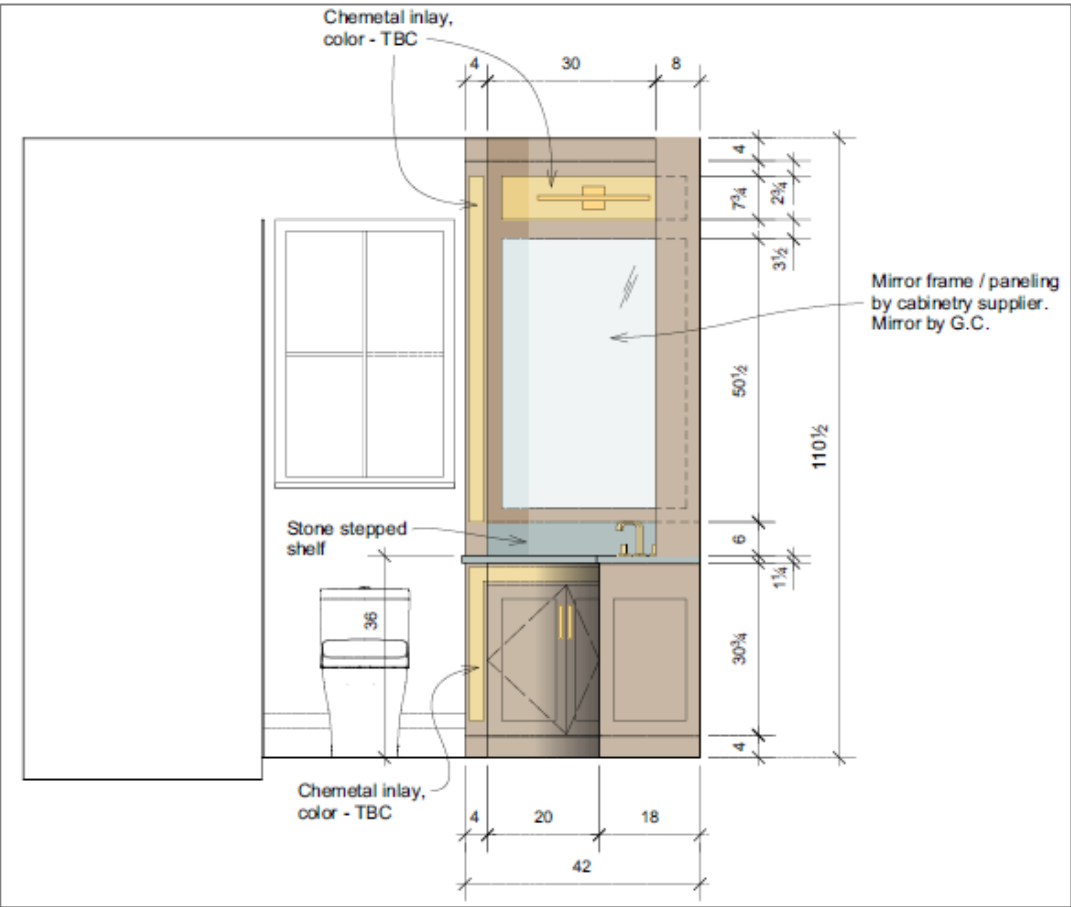
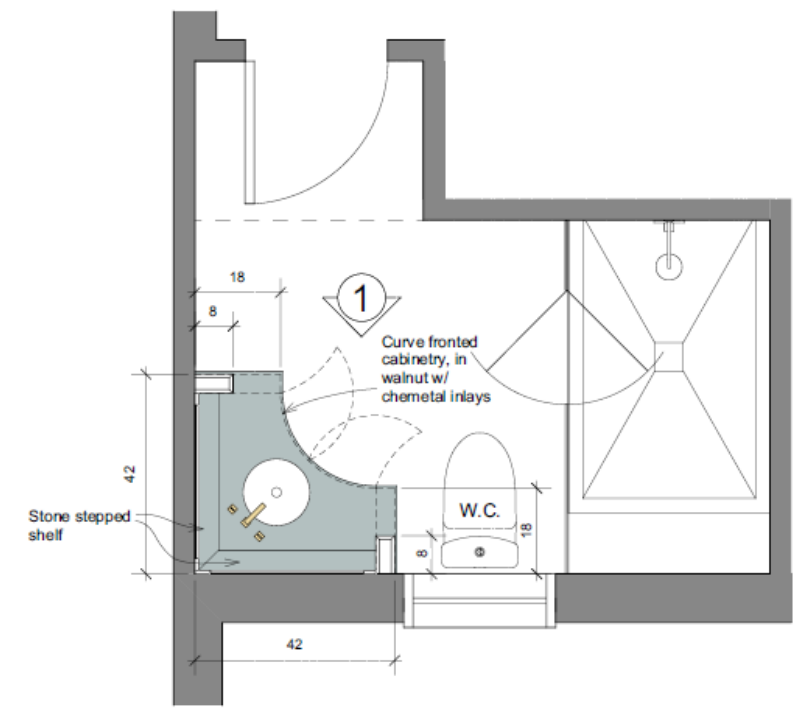


FAUCET  
FINISH IN SATIN GOLD



SINK  
FINISH AS SHOWN





FAUCET

FINISH AS SHOWN



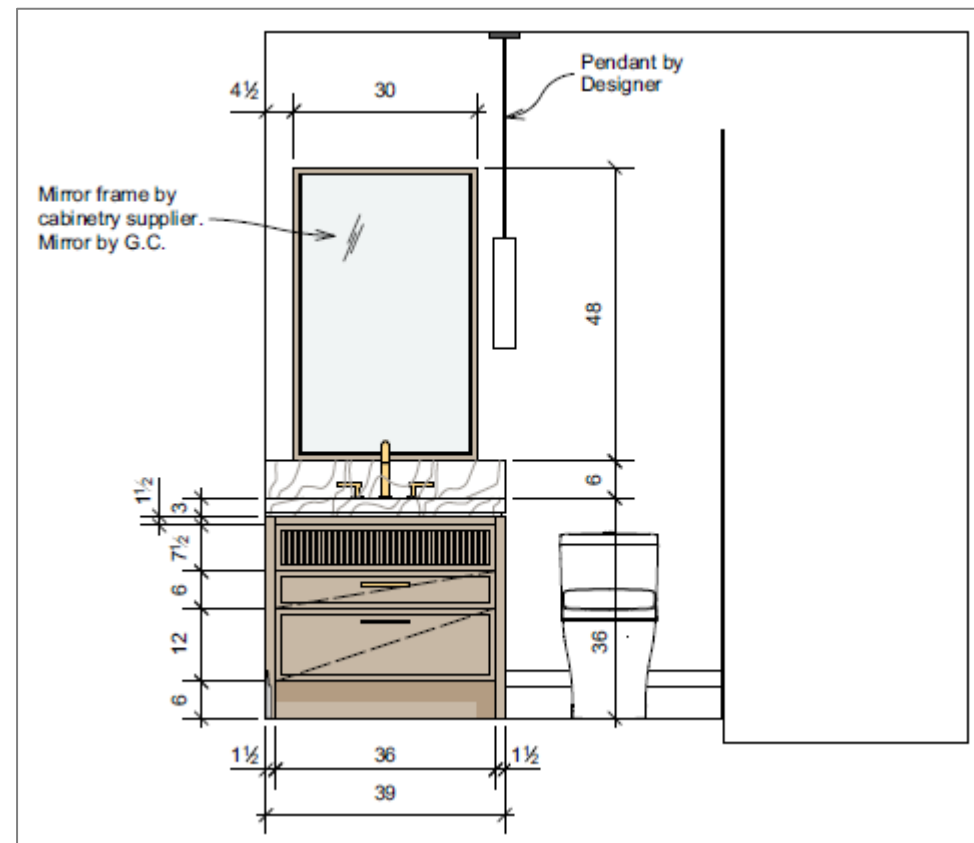
MAIN FLOOR

12 1/8" X 12 1/8" X 3/8"



BATH WALLS

12" X 24" X 3/8"

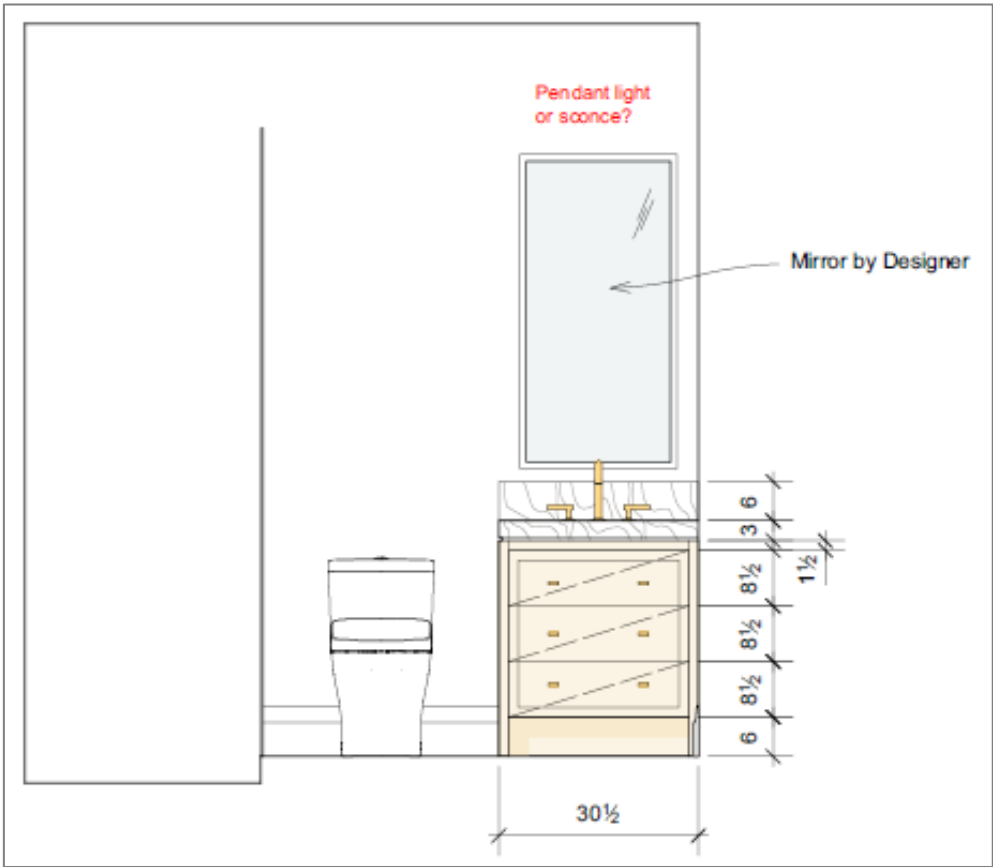
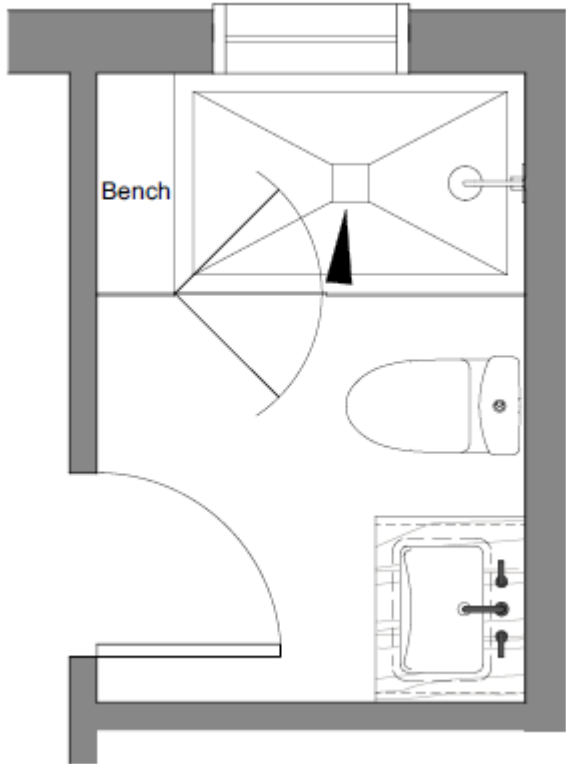


FAUCET  
FINISH AS SHOWN



SINK  
FINISH AS SHOWN





SHOWER AND  
MAIN WALLS  
48" X 109"



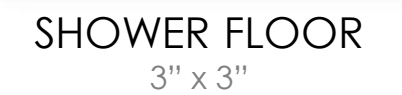
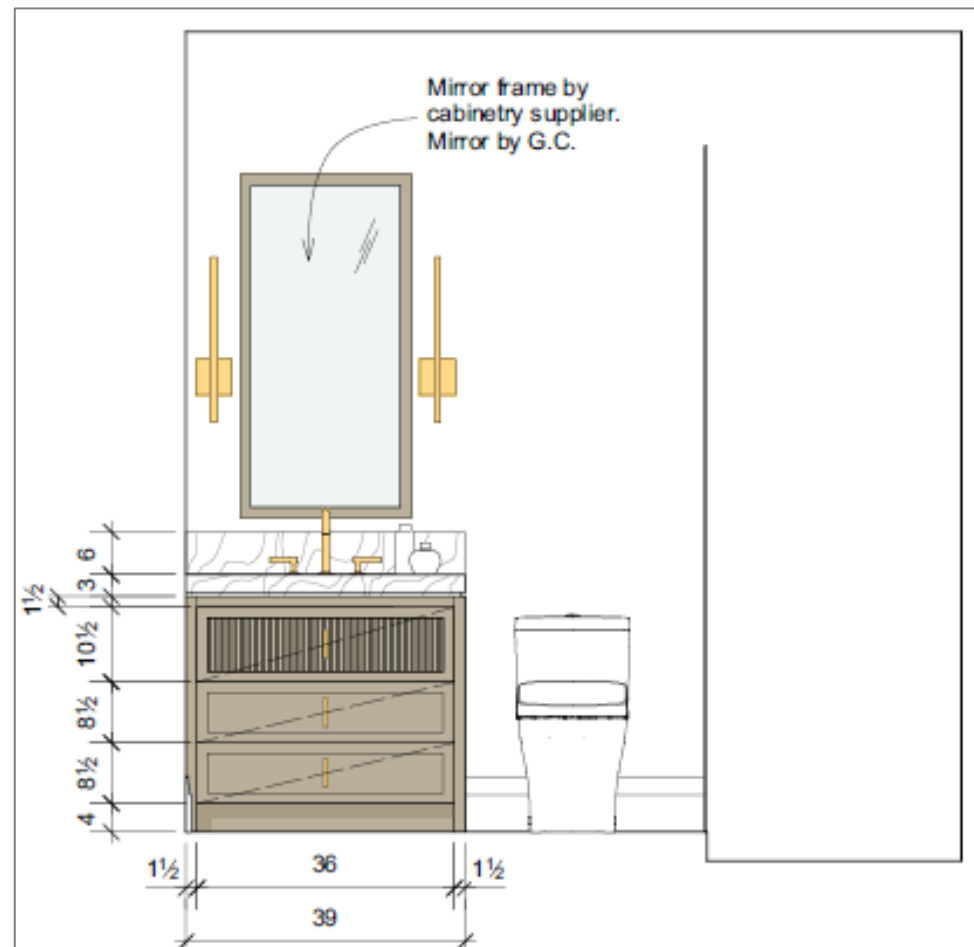
MAIN AND  
SHOWER FLOOR  
12" X 24"



FAUCET  
FINISH AS SHOWN

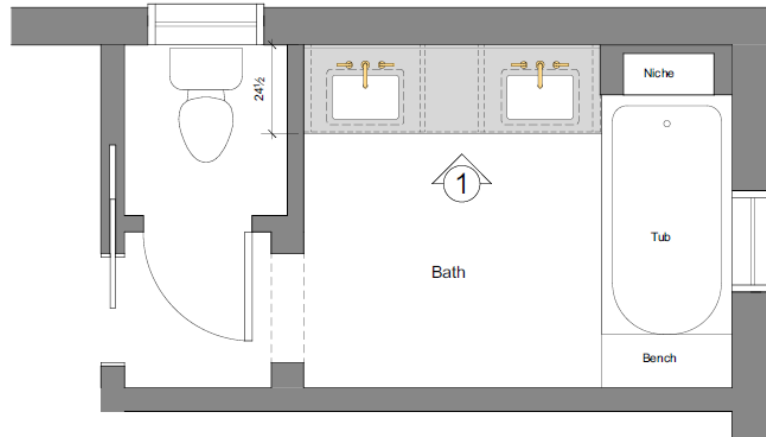


SINK  
FINISH AS SHOWN





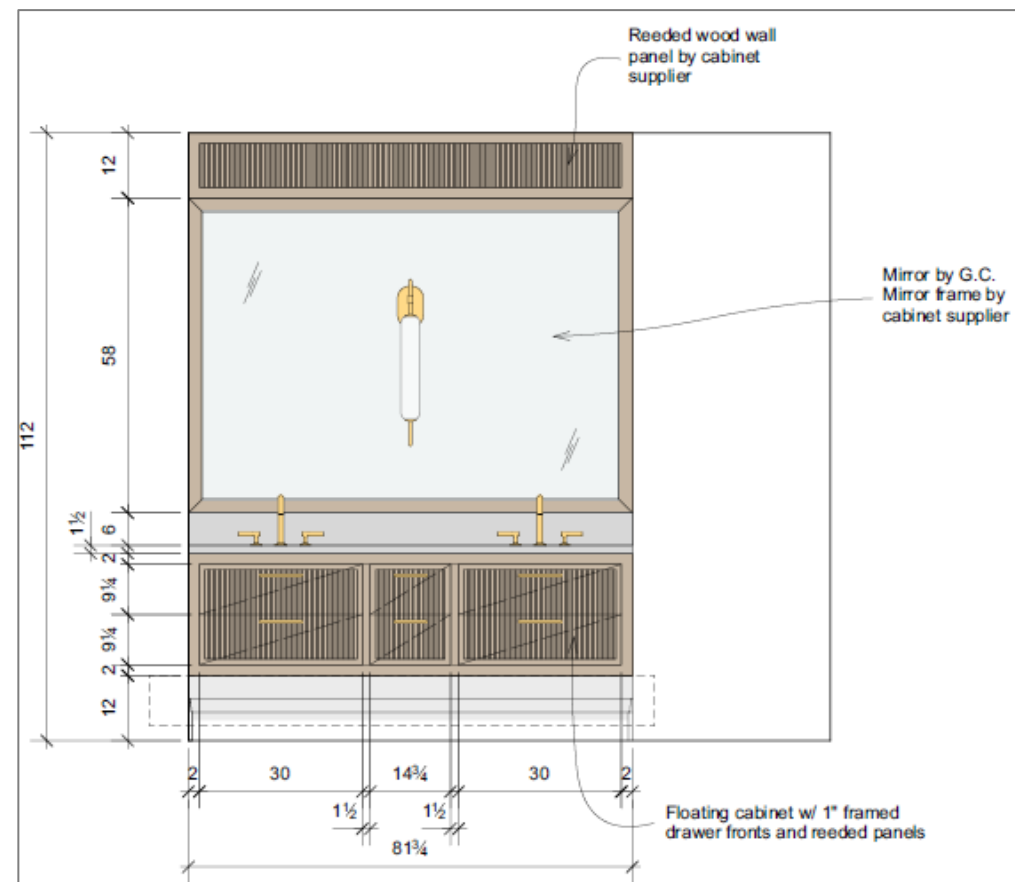




SHOWER AND  
BATH WALLS, TUB  
FACE AND DECK,  
PERIMETER ON  
FLOOR AROUND  
MOSIAC  
61" X 129"



INLAY IN  
MAIN  
BATH  
FLOOR

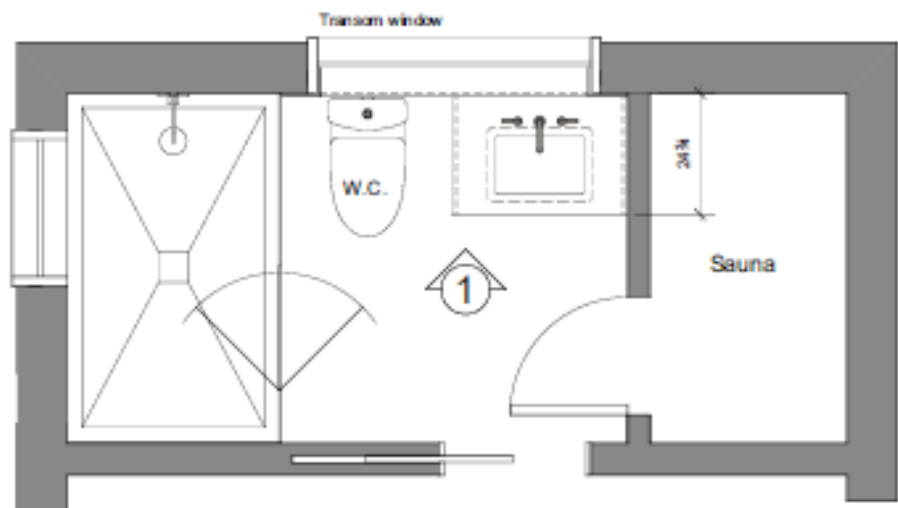


FAUCET  
FINISH AS SHOWN



SINK  
FINISH AS SHOWN





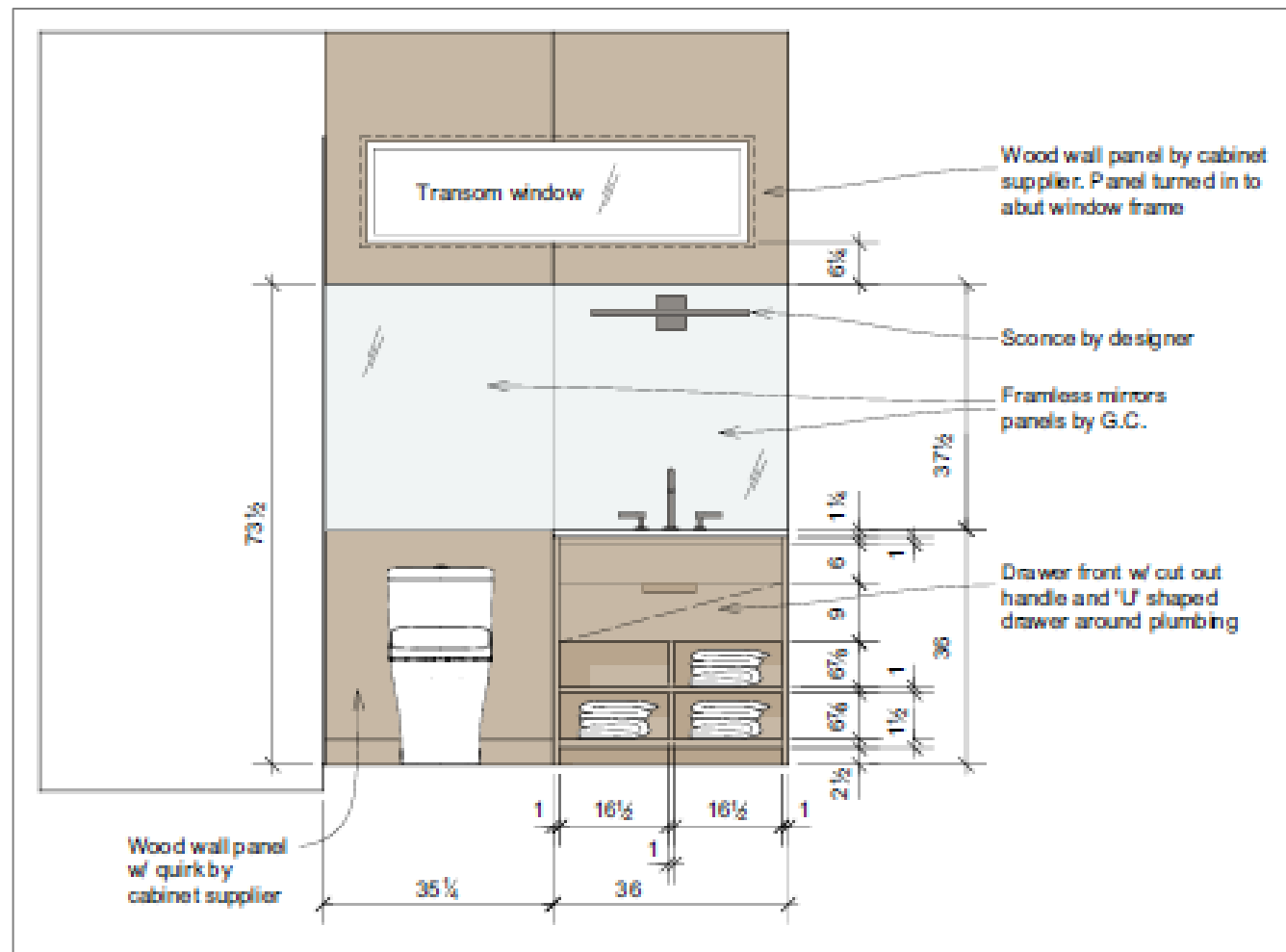
## 616 | FITNESS BATH

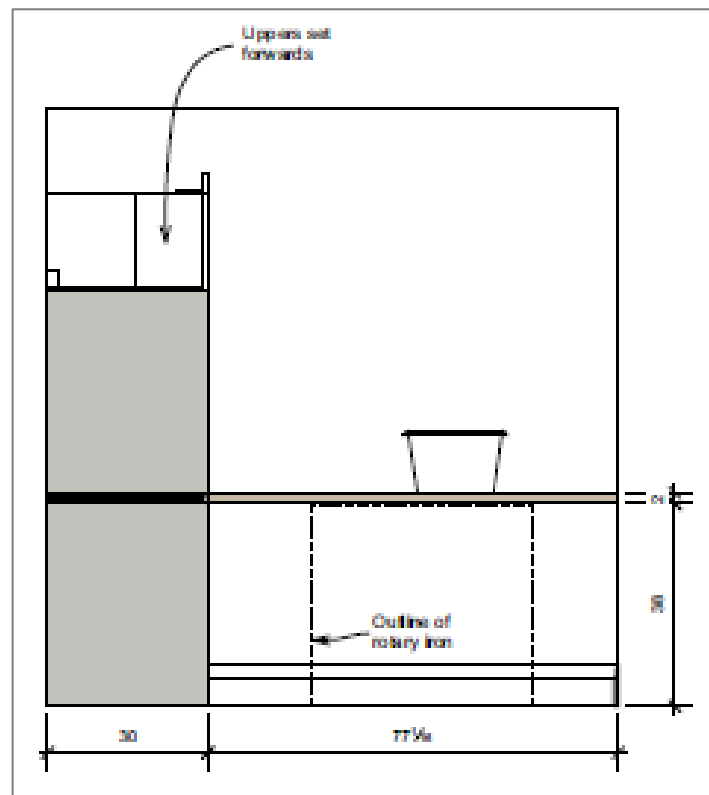
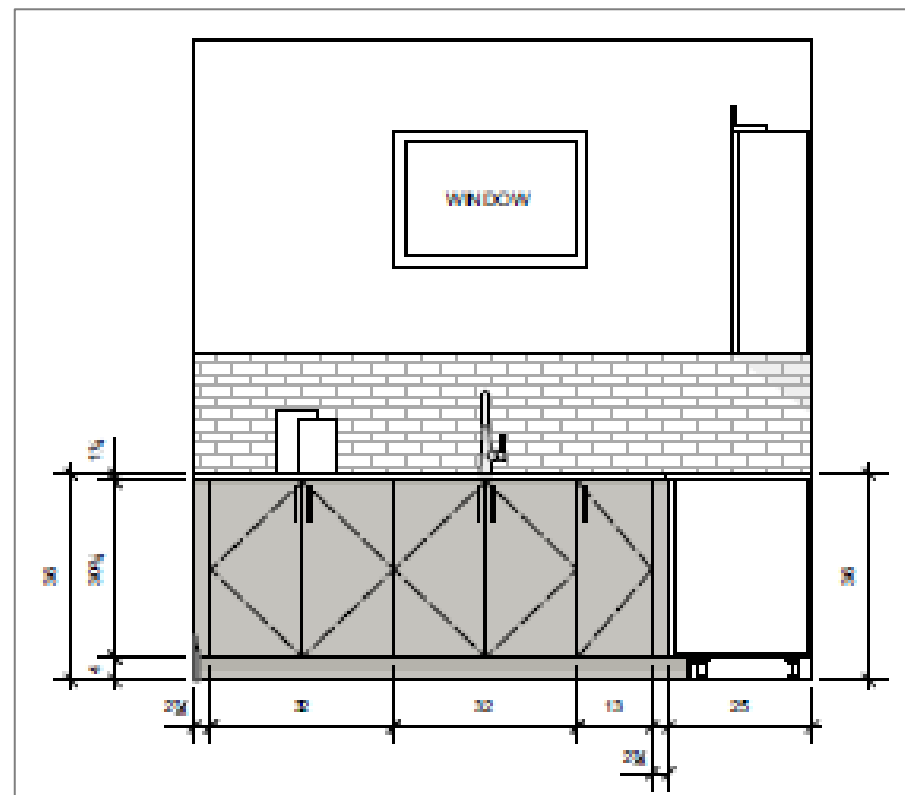
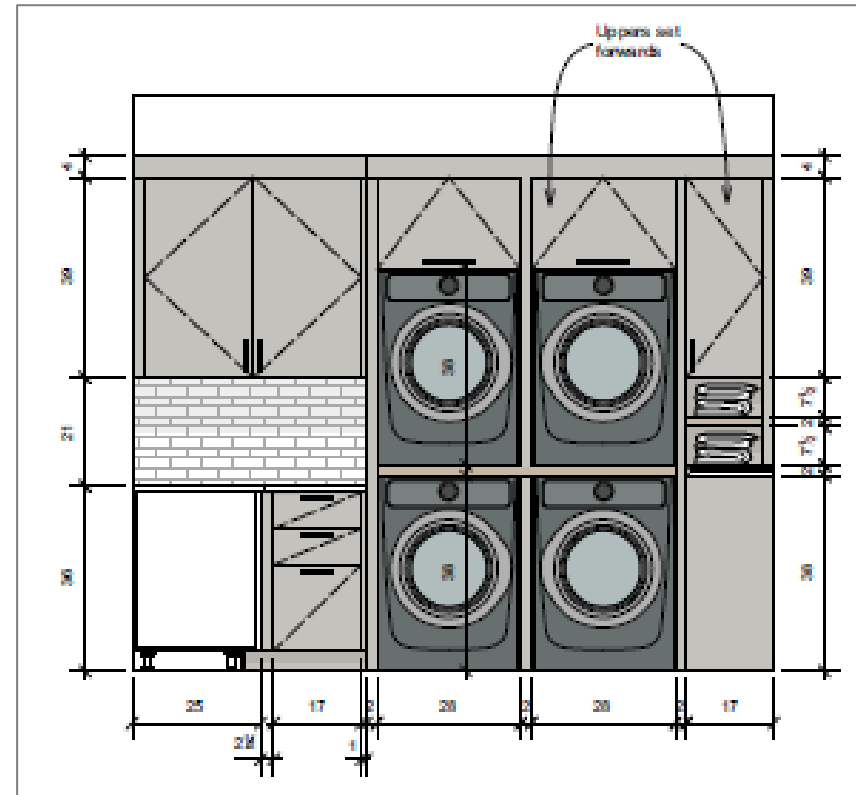
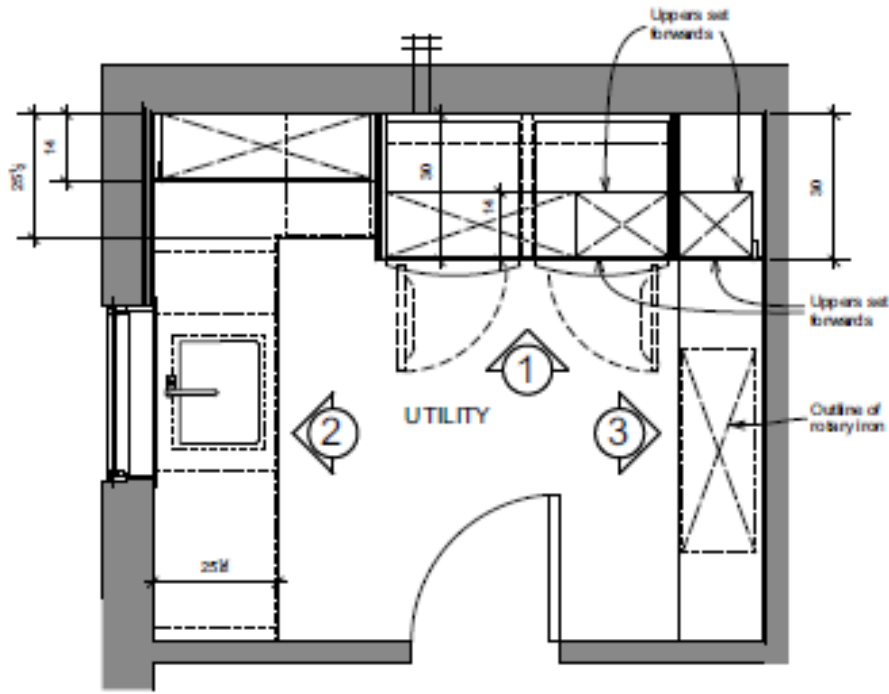


BATH AND  
SHOWER FLOOR  
5-7/16" X 5 7/16"



BATH WALLS  
12" X 24"



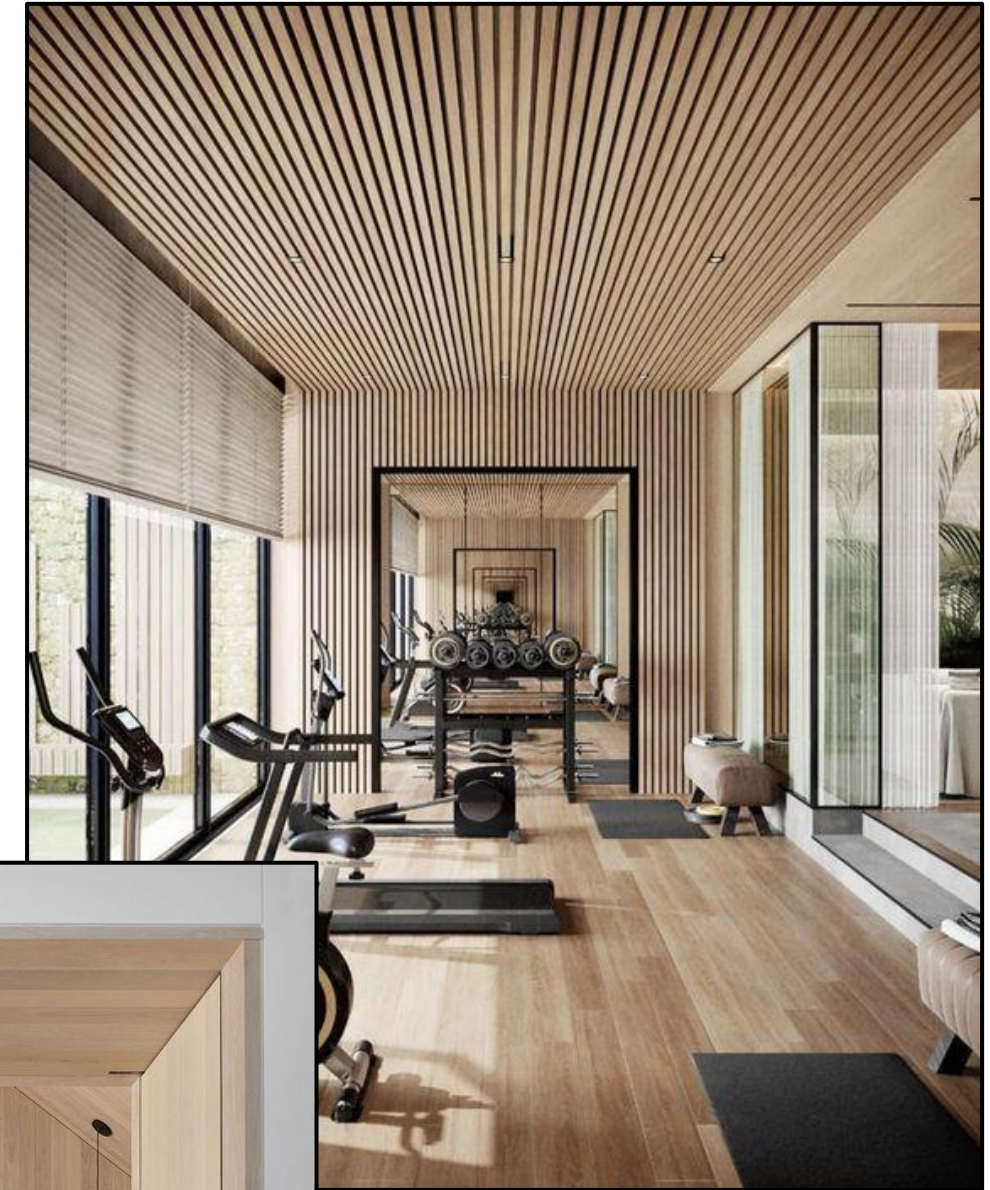
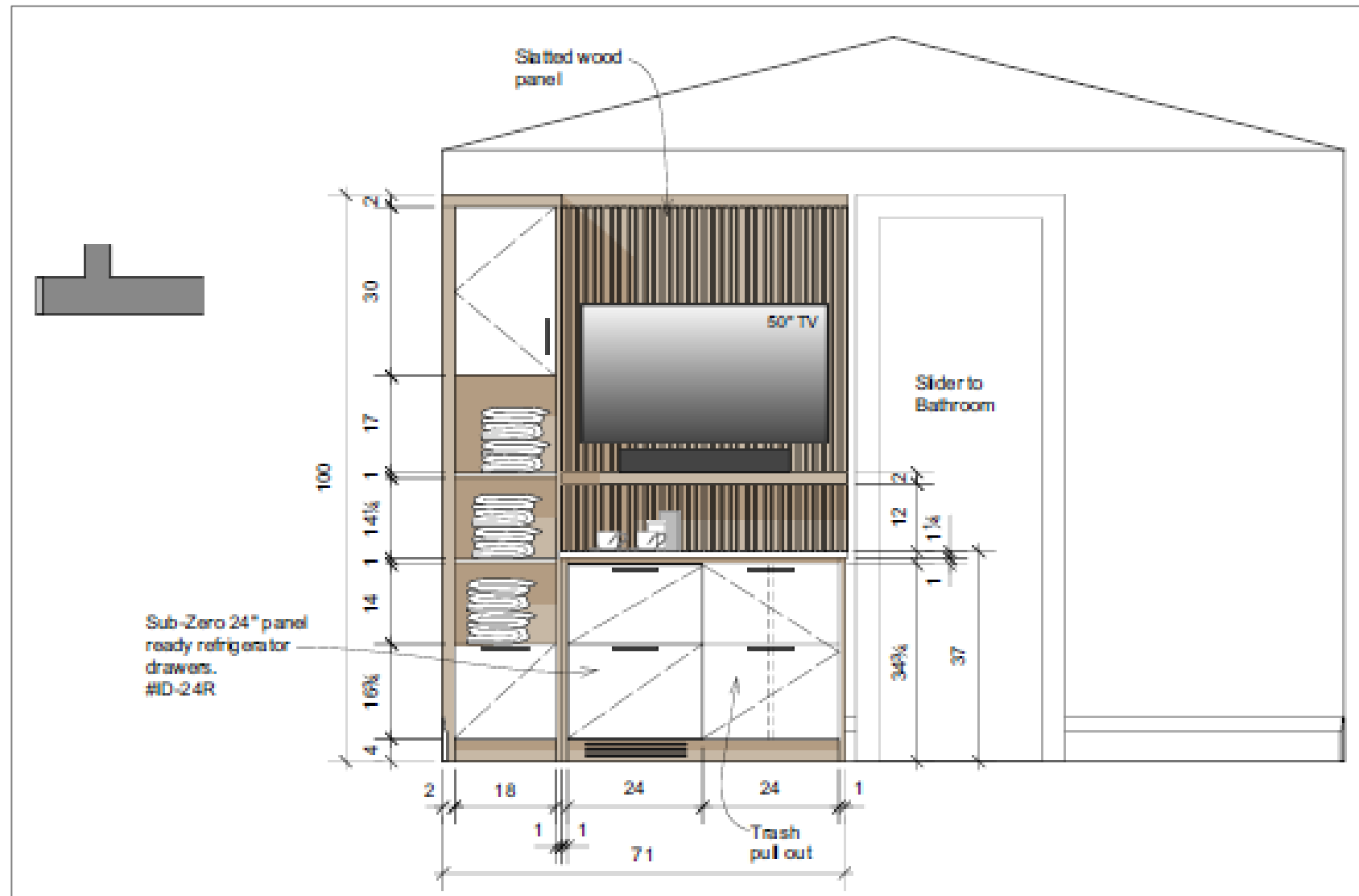


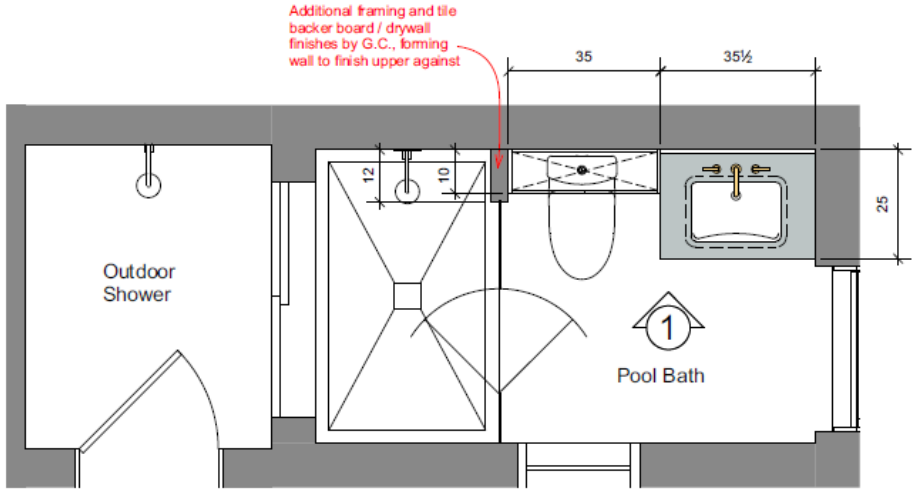
FAUCET  
FINISH AS SHOWN



SINK  
FINISH AS SHOWN



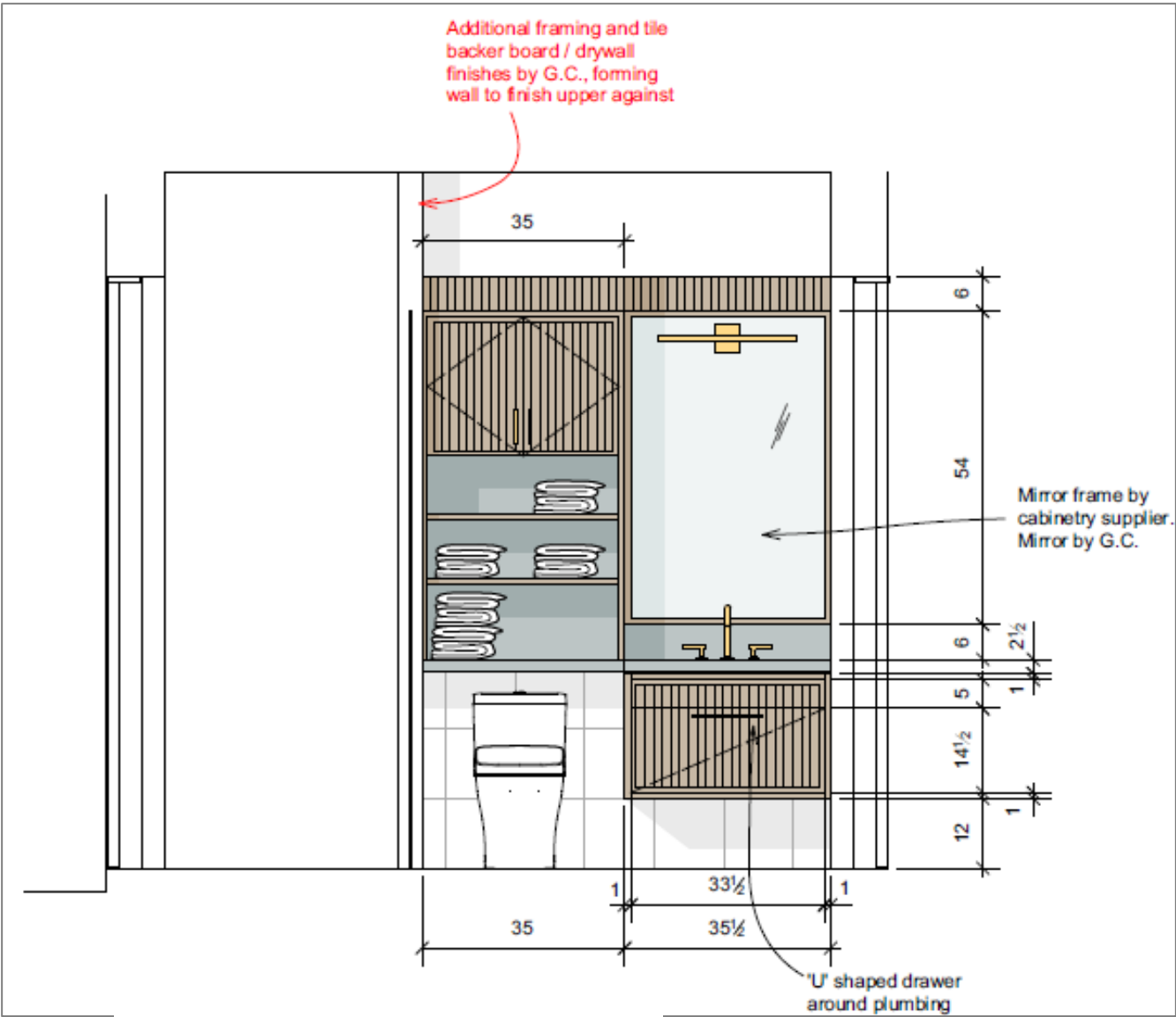




HOUSE EXTERIOR FAÇADE  
PER ARCHITECTURE SET  
2" x 10"



MAIN AND SHOWER  
FLOOR  
12" x 24" x 3/8"

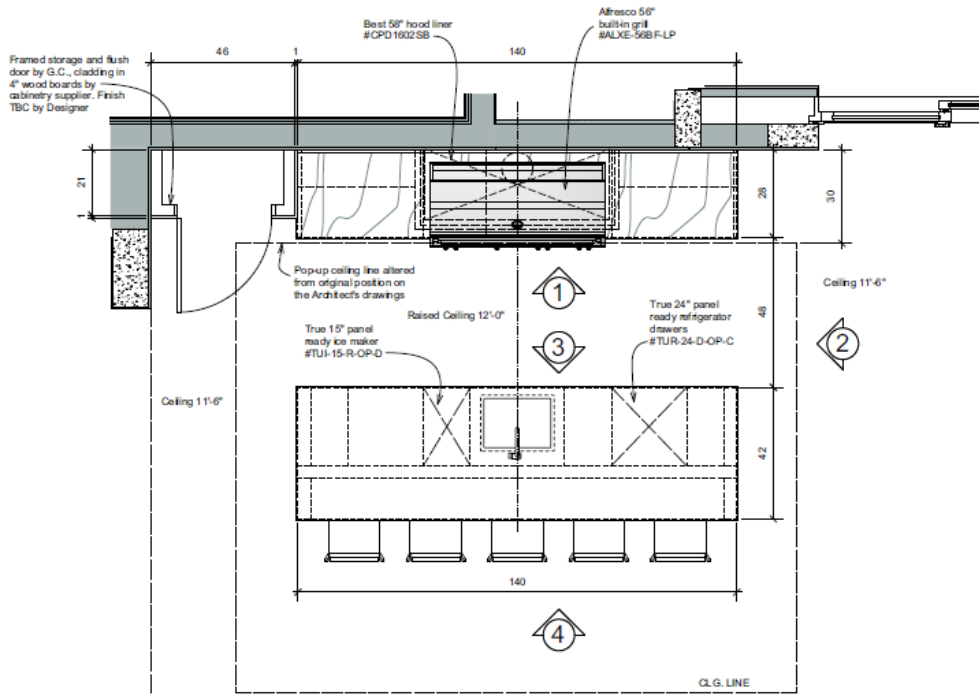


FAUCET  
FINISH AS SHOWN





HOUSE EXTERIOR FAÇADE  
PER ARCHITECTURE SET  
2" x 10"



OUTDOOR KITCHEN PLAN  
SCALE: 1/2"=1'-0"

